

# #ASHTAG

## ASHFIELD BOYS HIGH SCHOOL NEWSLETTER

TERM 2 WEEK 4 2020

	Monday	Tuesday	Wednesday	Thursday	Friday
25 - 29 May	<ul style="list-style-type: none"> <li>All students back.</li> <li>Face to face teaching will start for all students. No online classes will be conducted.</li> </ul>				
01 - 05 June					
08 - 12 June					

### PRINCIPAL'S REPORT

#### The end of Phase 1...

Today is the end of phase 1 – one day attendance per week. The boys have been absolutely exemplary in the way that they have approached the staged return to school. I'm very proud of the way that they have worked with us to ensure that the school is the safest place possible.

#### Return to school from 25<sup>th</sup> May

I'm sure that everyone is aware that all students in NSW will be returning to school full time from next Monday. There are a large number of very excited teachers to have the boys back in class!

Today will be the last day of digital learning from home and teachers will be working face-to-face with their classes from next week. While I'm sure that the staff will continue to use the online platforms that they have established for things like homework or assignments, there will not be any more interactive online learning from home. This is in line with the announcements made by the Premier and the Minister for Education this week.

As the school will be full from next week, we have developed a comprehensive plan for how this can happen. I'm confident that the boys and the staff are perfectly safe at school, especially given the additional cleaning and planning that we are putting in place.



117 Liverpool Rd, Ashfield  
 Tel: 9798 6620  
 Email: ashfieldbo-h.school@det.nsw.edu.au



## Arrangements for the return to school

### Year 12

Year 12 will continue to follow their existing timetable and use the “mega” classrooms we have set up. We will re-issue an amended assessment schedule next week to make sure that the boys are perfectly clear about dates and tasks.

### Home Rooms

To minimise movement around the school, reduce crowding and limit contact, we have established home rooms for every class in Years 7-11. From Monday, the teachers will move between classes and the boys will do most of their classes from their home room. Besides reducing contact, this also maximises the benefits of the enhanced cleaning of the school site. The boys will still go to specialist rooms for practical subjects but most other classes will take place in their home room. The rooms have all been set up with desks distanced, similar to an exam, and every boy will have his own desk for the day. This will assist in maintaining distancing in classes.

We have re-worked the rooming timetable for the entire school to make this possible. We will issue the new rooming timetable to the boys on Monday when they return.

### Enhanced Cleaning

The enhanced cleaning and disinfecting of the school will continue indefinitely. Every room, desk, seat and high touch surfaces are disinfected continuously throughout the day. The toilets and outdoor seats are cleaned and disinfected after every break.

### Hand Sanitising

Every room is stocked with hand sanitiser and disinfectant. Everyone will use hand sanitiser before entering classrooms. The boys have been fantastic at maintaining hygiene practices. Every teacher also has a “pandemic showbag” of sanitiser, wipes, paper towel and disinfectant.



### Sick Staff and Students

If your son is sick with even minor cold or flu symptoms, please keep him home and let us know.

### Canteen

The canteen will return to full operation from May 25<sup>th</sup>. The pre-COVID menu will be served.

### Staggered departure times

The boys usually arrive at staggered times in the morning. To allow for a staggered departure, avoid crowding and assist parents, we will use the following schedule for early departure of Stages 4 and 5. On their allocated day, the Juniors will leave school at 3pm and 2:20pm on Thursday.

Monday	Tuesday	Wednesday	Thursday	Friday
Stage 4	Stage 5	NA - SPORT	Stage 4	Stage 5

Year 11 and Year 12 will stay until 3:10pm every day. They have an HSC to do.



117 Liverpool Rd, Ashfield  
 Tel: 9798 6620  
 Email: ashfieldbo-h.school@det.nsw.edu.au



## Library

The library will remain open and the boys are encouraged to borrow and quiz. Every boy will be required to use hand sanitiser before entering the library. The library assistant is disinfecting every book that is returned and the books will remain out of circulation for 24 hours after their return. The entire library collection will be sprayed with disinfectant at the end of every day – I should have bought shares in Glen 20!

## Stairs and building entry points

Similar to Phase 1, each classroom will have a specific entry / exit point and set of stairs allocated. The boys will use these allocated places to enter and exit the buildings. This is designed to distance them around the site as much as possible. This worked really well during Phase 1 and the boys were simply magic at following the plan.

## Bubblers

The bubblers will remain locked. Can your son please bring a water bottle each day. The boys can use the two water filling stations if needed.

## Uniform

Normal uniform requirements continue. The boys will be permitted to wear Sports uniform on Wednesday and any day they have PE for the whole day. This eliminates the need to use the change rooms.

## Sport

All sport outside the school and contact sport in the school is cancelled in line with Departmental guidelines. Wednesday afternoons will become integrated sport for Year 7-10 and we have a series of appropriate sports and physical activities that the boys will complete each week on a rotational basis. I think the boys are going to enjoy what we have planned for them!

## Extra-Curricular Activities

All Extra-Curricular activities will cease until the end of Term 2. This will be evaluated at the end of Term 2. Music tuition is continuing on Zoom.

## School Entry

All entry to the school will be via the large gates on Liverpool road. The back gate to the station will be closed as the narrow walkway causes crowding.

## Parent Meetings

The current NSW Department of Education guidelines require us to limit visits to the school to those that are urgent only. Please call the office before you come to the school. For the time being, most parent contact will be by phone or another platform like Zoom if you prefer.



### Travelling to and from school – We need your help!

The boys have been all told during Phase 1 that our expectation is that they travel directly home after school and do not congregate and hang around. This expectation will continue next week.

Can you please have a conversation with your son about this. One grand Ashfield tradition that is going to be put on pause for a while, is the “after school Slurpee rush”. Most afternoons, lots of the boys rush to 7-Eleven after school and crowd around the Slurpee machine. It gets pretty crowded in there and I don’t think that this is advisable at the present time. It looks like some of us will be on Slurpee duty each afternoon...

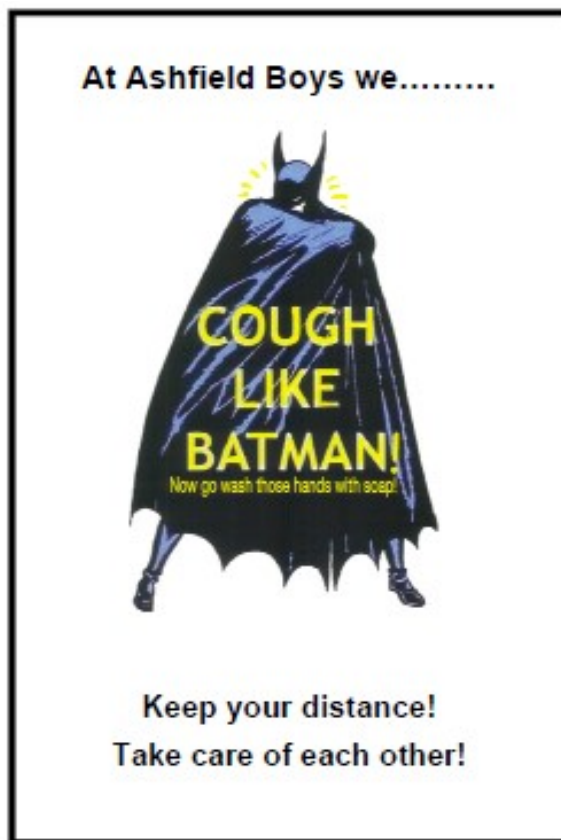
#### Cough like Batman

Every room now has a “Cough like Batman” poster. Batman will keep everyone safe!

#### Thanks!

Thanks for the wonderful support that we get from our parent community. I’m really excited to see the kids back next week! I’m sure lots of you are, like me, happy to see your sons go back to school as well!!

**Dwayne Hopwood**  
Principal



117 Liverpool Rd, Ashfield  
Tel: 9798 6620  
Email: ashfieldbo-h.school@det.nsw.edu.au





## WE JUST CANT WAIT TO GET BACK INTO CLASS!

On Friday 15<sup>th</sup> May while in my staffroom and in the midst of our sixth online Elective Music lesson for Term 2, two Year 10 students visited me to kindly ask to play instruments. Within minutes, two students turned into eight. We moved to D4 as it was the only room available and easily accessible to musical instruments.



The joy that the boys exhibited was indescribable and I was overwhelmed by how much the students missed the practical experiences and the social aspect of the subject.

Year 10 has just commenced the unit 'Popular Music' and I look forward to seeing all the students again in the coming weeks and preparing class ensembles.

*Mrs Markou*



117 Liverpool Rd, Ashfield  
Tel: 9798 6620  
Email: ashfieldbo-h.school@det.nsw.edu.au



## VISUAL ARTS UPDATE

Year 12 has been busy working on their HSC Body of work.



Year 11 has been working on their Still Life Body of work, mainly focusing on completing still life paintings. Students started by creating skull paintings using coffee and are currently learning to use acrylic paint.



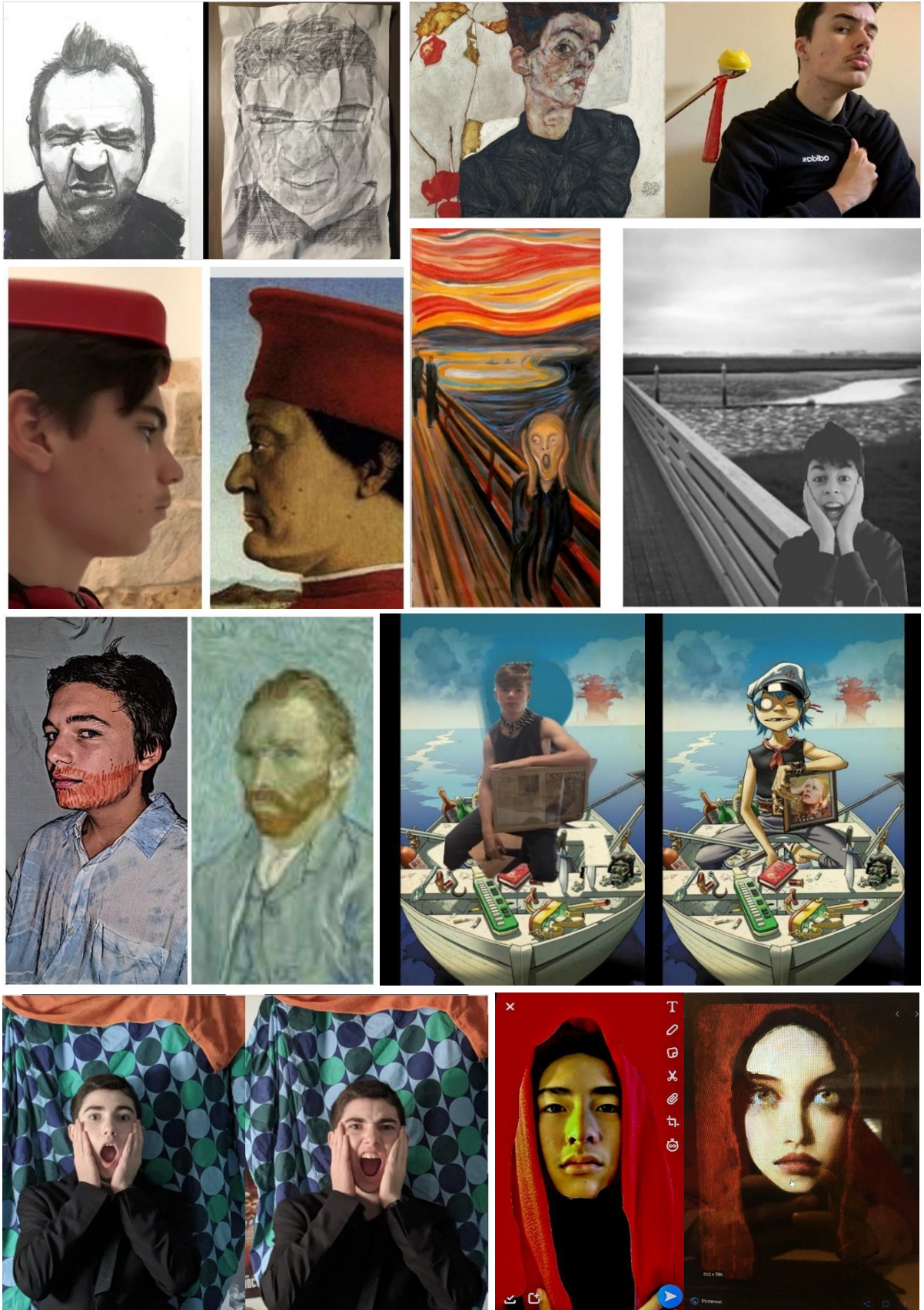
117 Liverpool Rd, Ashfield  
Tel: 9798 6620  
Email: ashfieldbo-h.school@det.nsw.edu.au





Year 9 and 10 have been working on a Selfie unit, looking at various techniques of photography and digital media. These works are appropriations they created of famous art throughout history.

#A S H F I E L D



117 Liverpool Rd, Ashfield  
Tel: 9798 6620  
Email: ashfieldbo-h.school@det.nsw.edu.au



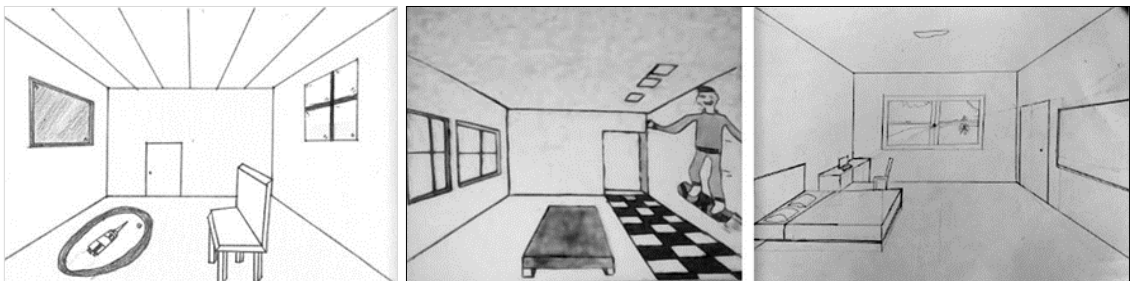




Year 8 has been creating Surrealist artworks, looking at a variety of different methods of interpreting this idea.



Year 7 has been learning about perspective- trying to create interior spaces with the illusion of depth. They have been working on creating ideal room drawings.



*Ms Jovicic and Ms Morris (CAPA: Visual Arts)*



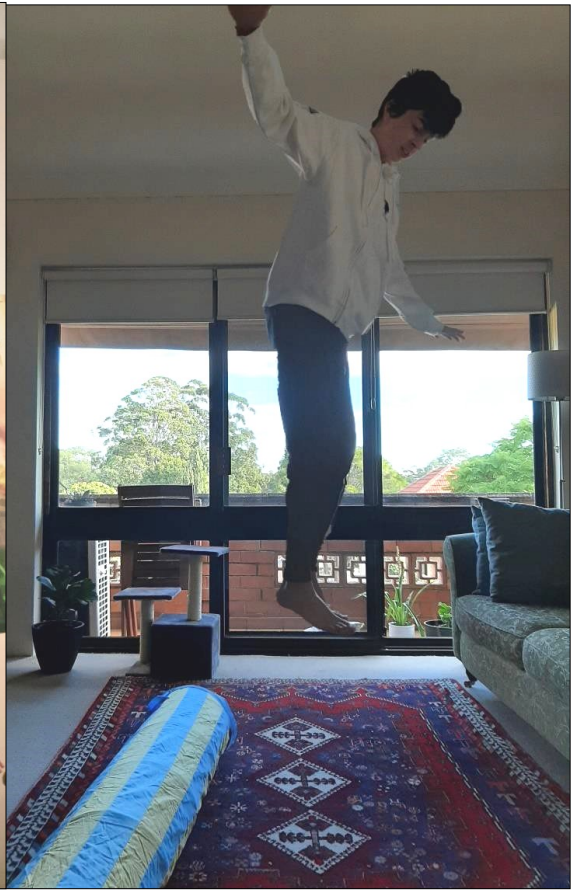
117 Liverpool Rd, Ashfield  
Tel: 9798 6620  
Email: ashfieldbo-h.school@det.nsw.edu.au





We have also learnt to levitate ourselves in photoshop...magical works Year 10.

#A S H F I E L D



117 Liverpool Rd, Ashfield  
Tel: 9798 6620  
Email: ashfieldbo-h.school@det.nsw.edu.au

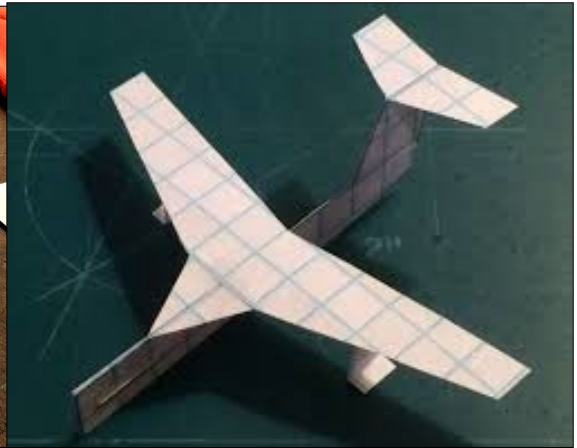
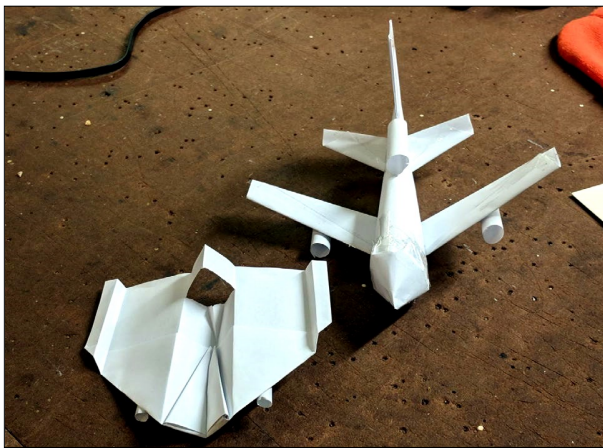
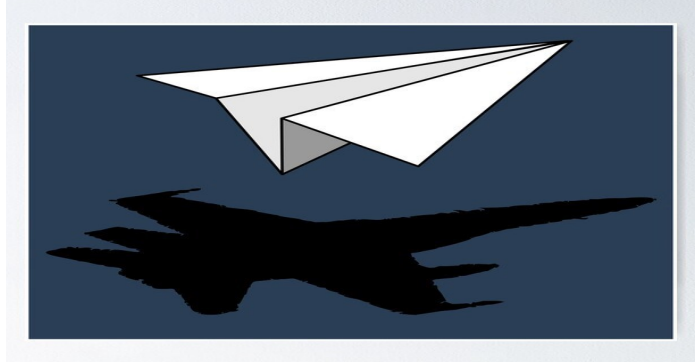


## TAS ACTIVITIES

### Aeronautical Engineering:

Year 12 Engineering students learn the different airplane parts, including wing, flap, aileron, fuselage, cockpit, propeller, spinner, engine, tail, rudder and elevator. Then they are introduced to the art of designing airplanes through paper airplane constructions. The goal is for students to learn important aircraft design considerations and how engineers must iterate their design to achieve success. They

also learn how engineers make small-scale models to test ideas and improve early designs. This prepares students for the associated activity in which they first make and test several provided paper airplane designs, after which they design and test their own paper airplane designs.



### The Paper Plane Challenge



Launch your planes.



117 Liverpool Rd, Ashfield  
Tel: 9798 6620  
Email: ashfieldbo-h.school@det.nsw.edu.au



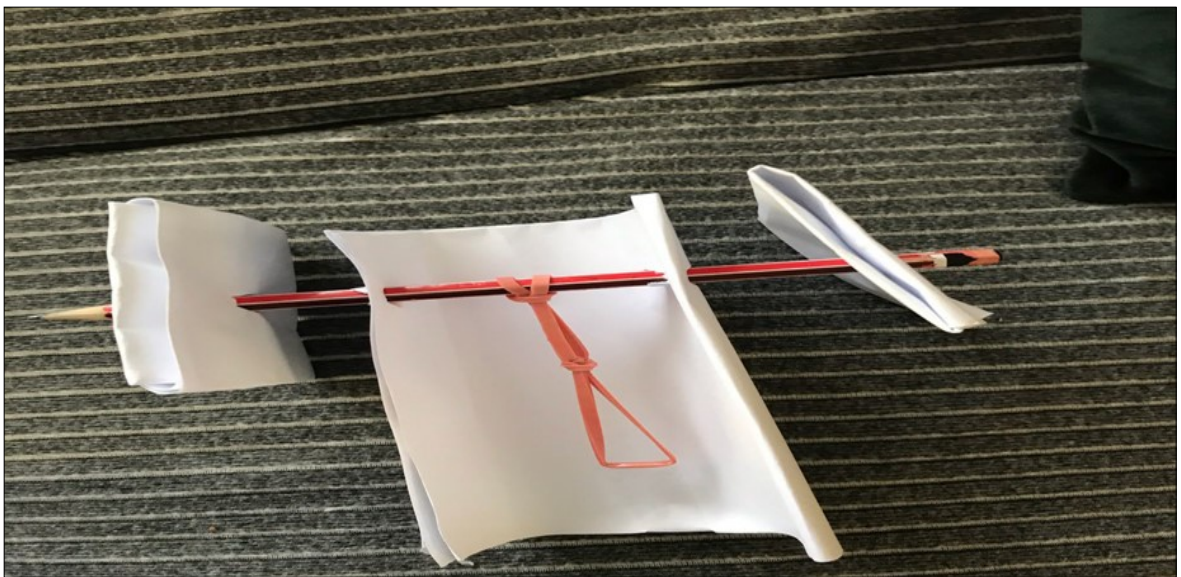


### Cardboard Rover Challenge

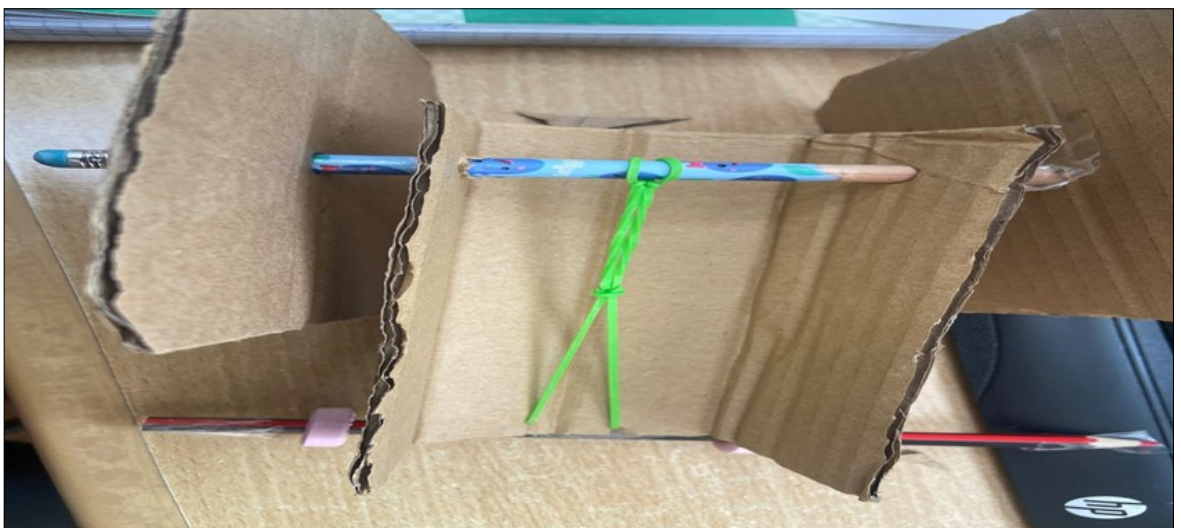
Rovers are a kind of carlike spacecraft that NASA uses to explore the surfaces of other worlds! So far, rovers have gone to Mars and the Moon – and one day, they might go even farther. NASA plans to land astronauts on the Moon by 2024.

These astronauts could use rovers to drive across the Moon’s surface, carry supplies and explore the area.

In this challenge, our year 7 engineering students build their own rubber-band powered rover that can scramble across the room at home. They build their rover out of cardboard, figure out how to use rubber bands to spin the wheels and use the engineering design process to improve their rover based on testing results.



Cello Hosana ( Year 7)



James Salter (Year 7)

*Mr Mahmud TAS Teacher*



117 Liverpool Rd, Ashfield  
Tel: 9798 6620  
Email: ashfieldbo-h.school@det.nsw.edu.au



## PERFECT PASTA



Year 12 Hospitality learning the art of handmade pasta. They now have a huge appreciation for the skills required to make their favourite food group! Bellissimo.

*Ms L Henry*



117 Liverpool Rd, Ashfield  
Tel: 9798 6620  
Email: ashfieldbo-h.school@det.nsw.edu.au





# WELLBEING



## Ashfield Boys High Schp

<https://www.thepushupchallenge.com.au/community/ash>

Welcome to our Push-Up Challenge Community. Ashfield Boys High School is passionate regarding the health and wellbeing of our whole community. Our teams are 'pushing through' this challenge to raise awareness of mental illness concerns of young people. You can support us by joining one of our teams or donate to an individual or team.

**29 legends**  
**14,419 push-ups completed**



Sat 16th - Day 6 - 169

In our country suicide rates remain disproportionately high for Aboriginal and Torres Strait Islander people. In 2018, suicide was the leading cause of death for both Aboriginal and Torres Strait Islander and non-Indigenous children. **In 2018, there were 169 Aboriginal and Torres Strait Islanders who died by suicide.**



Sun 17th - Day 7 - Rest

Nobody's life is without its stressors, and part of maintaining resilience is knowing when to **give yourself a break.**



Tue 19th - Day 9 - 201

**Approximately 20.1%** of Australians are living with mental ill health. Almost half of us (45%) will experience mental ill health at some point in our lives. However, less than half of the people who suffer with mental ill health will receive professional care. Improving our knowledge about mental ill health is recognised as an important step towards decreasing stigma and supporting people to get assistance.



Wed 20th - Day 10 - 130

The Push-Up Challenge 2020 is supporting headspace. Headspace provides no- or low-cost mental health services to young Australians aged 12-25. **In 2018-2019, headspace provided support to over 130 000 young Australians.**



Thu 21st - Day 11 - 180

**Around 1.80 million** Australians over the age of 15 feel they have insufficient social support. The impact of loneliness and social isolation can stretch beyond the short term and lead to increased risks of developing mental and physical ill health. Loneliness doesn't necessarily go away if we are surrounded by people.



Fri 22nd - Day 12 - 120

1200 hours an average Australian young person spends on social media per year. While there is some evidence that too much social media can increase stress, it's not all bad news. In a UK study, young people who were online for at least **120 minutes per day** felt more connected and supported by their peers. For people experiencing mental ill health, numerous peer-to-peer support communities have formed online that can increase connectedness, allow for sharing of stories, and promote a sense of belonging. Additionally, more mental health services are becoming available online.

#ASHFIELD



117 Liverpool Rd, Ashfield  
Tel: 9798 6620  
Email: ashfieldbo-h.school@det.nsw.edu.au



## WELLBEING



The Wellbeing Team has set up an individual Wellbeing Google Classroom for all year groups. The aim of this google classroom is to check in with students while we are doing on-line learning. This is the platform for year advisers, to do what I normally do in person. This includes ensuring they are kept in the loop with information on a range of topics and welfare support. This classroom will also contain some resources and activities that you may need now or in the future.

If your son would like to chat to someone, as part of the well-being side of this classroom, our school counsellors - Francesca and Suzy will also let them know how they can access counselling at this time.

**This platform will remain in use when we return to regular schooling.**

We have been impressed with the number of boys who joined their Wellbeing Classroom for both the Wellbeing 'check in' and accessing various resources and information.

An example of the types of resources post on the Wellbeing Classrooms is below:

**Mindfulness is an important tool for your wellbeing but particularly in times of stress.**

**Brilliant things happen in calm minds.**

**Watch this short video produced by HeadSpace**

[https://www.youtube.com/watch?v=IACf4O\\_eSt0](https://www.youtube.com/watch?v=IACf4O_eSt0)



**headspace**®

National Youth Mental Health Foundation



117 Liverpool Rd, Ashfield  
Tel: 9798 6620  
Email: ashfieldbo-h.school@det.nsw.edu.au





## EXCURSION UPDATE

As you are aware, excursions for 2020 have been cancelled or postponed until further notice. Students that have paid for cancelled excursions, will have their money credited into their school account for future use.

### CANCELLED

Royal Easter Show – Year 9  
Othello-William Shakespeare – Year 11  
Bicentennial Park Field Study - Year 11  
Newington Armoury Art Gallery – Years 11 & 12  
Legal Studies- Parramatta Court - Year 11  
ICAS Computer Competition  
ICAS Maths Competition

Biology Ecosystems Dynamic – Year 11

### POSTPONED UNTIL FURTHER NOTICE

Geography Field Trip - Year 10  
Australian Geography Competition  
Year 12 Formal  
Taronga Zoo

### SCHOOL FEES

Statement of Accounts have not been sent to you as yet.

If you would like to pay your son's school fees, please email Ms Jane and she will be more than happy to email you a copy.

[Jane.stiglic@det.nsw.edu.au](mailto:Jane.stiglic@det.nsw.edu.au)

### CASH

In an effort to keep both our students and staff safe, can I please ask that you **do not pay with cash** .

Please use our online system when paying for school related items.

If you require a refund, please email your request, noting your receipt number

Thank you for your understanding.

**Poppy Sotiriou**  
School Administration Manager



117 Liverpool Rd, Ashfield  
Tel: 9798 6620  
Email: [ashfieldbo-h.school@det.nsw.edu.au](mailto:ashfieldbo-h.school@det.nsw.edu.au)



## Year 7 Rooming

These are your Home Rooms:

	<b>7E</b>	<b>7F</b>	<b>7S</b>	<b>7W</b>	<b>7Y</b>
<b>Roll Call &amp; Home Room</b>	<b>F4</b>	<b>F3</b>	<b>F2</b>	<b>F5</b>	<b>F6</b>

You will stay in these rooms each period except for:

### Tuesday

Period	Classes that Move
1 and 2	7TM1 = D2    7TM2 = G21    7TM5 = D12    VA4 = G12
3 and 4	7TME3 = D5    7TME4 = D2    7TME5 = D13    VA2 = G14    VA1 = G11

### Wednesday

Period	Classes that Move
1 and 2	7TM6 = D14    7TM8 = D13    VA7 = G11
3 and 4	7TME6 = D5    7TME7 = D12    VA8 = G14

### Thursday

Period	Classes that Move
3 and 4	7TME4 = D2    7TME1 = D14    7TME2 = D13    VA5 = G14    VA3 = G11

### Friday

Period	Classes that Move
5 and 6	7TM7 = D14    7TME8 = D13    VA6 = G11



117 Liverpool Rd, Ashfield  
 Tel: 9798 6620  
 Email: ashfieldbo-h.school@det.nsw.edu.au





## Year 8 Rooming

These are your Home Rooms:

	8A	8C	8D	8M	8S	8T
Roll Call & Home Room	E3	F11	G3	G12	G1	G2

You will stay in these rooms each period except for:

Monday

Period	Classes that Move			
1 and 2	8TME1 = G21	8TME2 = D12	VA3 = G14	8TM42 = D2
3 and 4	8TM52 = D5	8TM62 = G21	8TM82 = D12	VA7 = G14
5 and 6	8TME3 = D14	8TME4 = G21	VA1 = G11	VA2 = G14

Tuesday

Period	Classes that Move			
5 and 6	8TME72 = D13	8TME5 = G21	VA6 = G11	VA8 = G14
7 and 8	8TM12 = D14	8TM22 = G21	8TM32 = D12	VA4 = G14

Friday

Period	Classes that Move			
7 and 8	8TME7 = G21	8TME7 = D2	8TME8 = D12	VA5 = G14



117 Liverpool Rd, Ashfield  
 Tel: 9798 6620  
 Email: ashfieldbo-h.school@det.nsw.edu.au



## Year 9 Rooming

**These are your Home Rooms:**

	9F	9H	9K	9B	9D	9E
Roll Call/ Home Room	G27	G28	G29	G12	G24	G26

**You will stay in these rooms each period except for:**

### Monday

Period	Classes that Move
3 and 4	9MAS= G27 9MAA=G28 9MAE=G29 9MAG= G22 9MAL =G24 9MAP=G26
5 and 6	9COMX=G27 9FTX=D5 9ITENGX=D2 9ISTEM=G23 9MUSX= D11 9CHINX =G26 9PASSX = Gym

### Tuesday

Period	Classes that Move
5 and 6	9COMX=G27 9FTX=D5 9ITENGX=D2 9ISTEMX=G23 9MUSX=D11 9CINX=G26 9PASSX= Gym
7 and 8	9MAS= G27 9MAA=G28 9MAE=G29 9MAG= G22 9MAL =G24 9MAP=G26

### Wednesday

Period	Classes that Move
3 and 4	9DRAY=D11 9COMY=G28 9FTY=G27 9ISTY=G23 9MAQY=G24 9PASSQ=Gym 9VAY = G11

### Thursday

Period	Classes that Move
5	9MAS= G27 9MAA=G28 9MAE=G29 9MAG= G22 9MAL =G24 9MAP=G26

### Friday

Period	Classes that Move
2	9MAS= G27 9MAA=G28 9MAE=G29 9MAG= G22 9MAL =G24 9MAP=G26
7 and 8	9DRAY=D11 9COMY=G28 9FTY=D5 9ISTY=G23 9MAQY=G24 9PASSQ=Gym 9VAY = G11



117 Liverpool Rd, Ashfield  
Tel: 9798 6620  
Email: ashfieldbo-h.school@det.nsw.edu.au





## Year 10 Rooming

These are your Home Rooms:

	10H	10Q	10R	10T	10W
Roll Call/ Home Room	D1	D4	D3	E5	E4

You will stay in these rooms each period except for:

Monday

Period	Classes that Move
5 and 6	10MAA=D1 10MAE=D4 10MAG=D3 10MAL= E5 10MAP =E4

Wednesday

Period	Classes that Move
1 and 2	10COMX=D1 10DRAX=D11 10FTX=D5 910INTEX=D2 10ISTX=G23 10VAX=G14
3 and 4	10MAA=D1 10MAE=D4 10MAG=D3 10MAL= E5 10MAP =E4

Thursday

Period	Classes that Move
1 and 2	10INTEY=D2 10INTT1Y=D12 10INTT2Y= D14 10ISTY=G21 10MUSY= D11 10PASSY=Gym

Friday

Period	Classes that Move
3 and 4	10INTEY=D2 10INTT1Y=D12 10INTT2Y= D14 10ISTY=G21 10MUSY= D11 10PASSY=Gym
5 and 6	10COMX=D1 10DRAX=D11 10FTX=D5 910INTEX=D2 10ISTX=G23 10VAX=G14
7 and 8	10MAA=D1 10MAE=D4 10MAG=D3 10MAL= E5 10MAP =E4



117 Liverpool Rd, Ashfield  
Tel: 9798 6620  
Email: ashfieldbo-h.school@det.nsw.edu.au



# YEAR 11 ROOMING

Follow your normal timetable but go to these rooms.

Line	1	Room	2	Room
	Ancient History	F13	Chinese	F13
	Biology	F14	Biology	F14
	Maths Advanced	F15	Modern History	F15
	Maths Standard: Ms Lu	F16	SLR	F16
	Maths Standard: Mr T	F1		F1
	Food Technology	D5	Visual Arts	G11
			Drama	D11
			Engineering Studies	D2

Line	3	Room	4	Room
	Eng: Ms Stitt	F13	Biology	F13
	Eng: Mr Ahearne	F14	Chemistry	F14
	Eng: Ms Witting	F15	Business Studies	F15
	Eng: Ms Finigan	F16	Legal Studies	F16
	Eng: Ms Pool	F1	Physics	F1
			HOSP	Library

Line	5	Room	6	Room
	Business	F13	Modern History	F13
	Maths Advanced	F14	Studies of Religion	F14
		F15	Chemistry	F15
		F16	Economics	F16
	Math Standard	F1	PDHPE	F1
	Music	D11	SDD	G23
	Construction	D12		



117 Liverpool Rd, Ashfield  
 Tel: 9798 6620  
 Email: ashfieldbo-h.school@det.nsw.edu.au





## YEAR 12 ROOMING

Follow your normal timetable and go to these rooms

Line	1	Room	2	Room
	12EA.1H: POOLN	F2/3	12InTT.2H: JONESG	D12
	12EALD.1H: RICHARDSONR	Library	12MA.2H1: WHITEM	Hall
	12ES.1H1: FINIGANL	Hall	12MA.2h2 TENEFRANCIA	E2
	12ES.1H2: KUCHERUKN	E2	12MA.2H1: THOMASM	F2/3
	12ES.1H3: WHITTINGA	C/Room	12MS2.2H2: KOBEISSIA	C/Room
			12Study.: WHITEC G25	G25

Line	3	Room	4	Room
	12BIO.3H: ARYAA	Library	12AH.4H: CHATWINJ	Hall
	12BUS.3H: BURFORDJ	C/Room	12BUS.4H: ZACZEKC	Library
	12CHIN.3H: WANGE	E2	12CHE.4H: CURRANB	C/Room
	12MH.3H: PHILLIPSA	F2/3	12ENGST.4H: MAHMUDK	E2
	12MU.3H: PIETERSEI	D11	12MS2.4H: MARKSM	F2/3
	12SDD.3H: CINIA	G23	12Study.: LONGMANJ	G25

Line	5	Room	6	Room
	12ECO.5H: SKELTONJ	E2	12BIO.6H: PRASADM	C/Room
	12HOS.5H: HENRY	Kitchen	12CHE.6H: ARYAA	Library
	12MH.5H RADOJEVICM	F2/3	12FT.6H.BELLEPAGES	E2
	12PD.5H: TYLERW	Hall	12VA.6H1: JOVICICD	G11
	12PH.5H: LAMS E5	Library	12VA.6H2: MORRISC	G14
	12Study.: WHITEC	G25		

N/B – C/Room is the teacher common room.



117 Liverpool Rd, Ashfield  
Tel: 9798 6620  
Email: ashfieldbo-h.school@det.nsw.edu.au



# RETURN TO SCHOOL HOME ROOMS

## Year 7

Team	Room
Street	F2
Florey	F3
Evatt	F4
Woods	F5
Yonupingu	F6

## Year 8

Team	Room
Shakespeare	G1
<b>Aristotle</b>	<b>E3</b>
<b>Caesar</b>	<b>F11</b>
Da Vinci	G3
Tolstoy	G2
Mabo	G12

## Year 9

Team	Room
Brabham	G22
Dodson	G24
Eccles	G26
Flannery	G27
Hyams	G28
Kieman	G29

## Year 10

Team	Room
Hollows	D1
Quilty	D4
Rose	D3
<b>Tao</b>	<b>E5</b>
<b>White</b>	<b>E4</b>

## Year 11

Team	Room
Confucius	F14
Descartes	F15
Einstein	F13
<b>Hawking</b>	<b>F1</b>
Plato	F16

## Year 12

Year 12 will continue to use their mega rooms as they have been since their return to school.



117 Liverpool Rd, Ashfield  
Tel: 9798 6620  
Email: ashfieldbo-h.school@det.nsw.edu.au

