

#ASHTAG

ASHFIELD BOYS HIGH SCHOOL NEWSLETTER

TERM 3 WEEK 4 2019

The next three weeks for your diary

| | Monday | Tuesday | Wednesday | Thursday | Friday |
|--------------|---|---------|--|---|--|
| 19 - 23 Aug | <ul style="list-style-type: none"> Year 12 Trial HSC Exam - last day | | <ul style="list-style-type: none"> 8B Sydney Theatre Excursion | | <ul style="list-style-type: none"> Daffodil Day |
| 26 - 30 Aug | | | <ul style="list-style-type: none"> Bushcare Year 9 | | |
| 02 - 06 Sept | | | <ul style="list-style-type: none"> Exec Meeting with CGHS NESAs at ABHS | <ul style="list-style-type: none"> Science Competition Year 11 Meeting Captain Election | <ul style="list-style-type: none"> Legacy Badge Day |

PRINCIPAL'S REPORT

Thanks to all the parents and staff who supported the P&C at the Trivia night last Friday. It was a fun evening that underscored the fantastic sense of community that we are lucky to enjoy as a school. Thanks especially to Evan Shapiro, Adam Shapiro, Eddy Jokovich, Amanda Ong and all the other parents who worked so hard to make the evening a success.



Dwayne Hopwood
Principal



117 Liverpool Rd, Ashfield
Tel: 9798 6620
Email: ashfieldbo-h.school@det.nsw.edu.au



#ASHFIELD



117 Liverpool Rd, Ashfield
Tel: 9798 6620
Email: ashfieldbo-h.school@det.nsw.edu.au



7 TOLSTOY'S EXCURSION INTO THE WORLD OF SHAKESPEARE!

To complete their learning of Shakespeare's *A Midsummer Night's Dream*, 7 Tolstoy were fortunate enough to attend a production of the play at the Seymour Centre last Thursday. Full of excitement, we found our seats, right up the front (we didn't miss one bit of the action!) and settled in to watch a play of laughs, tears, sadness and silliness! We all agreed that Puck was a very funny character and was truly up to no good, applying a love potion into the eyes of the four confused lovers that wandered through the Athenian forest. But then toward the end of the play, our hearts went out to Bottom, the very amusing mechanical whose head had been turned into a donkey. The boys really enjoyed the slapstick comedy and silliness as the world 'fixed' itself and normality was restored! A great day out!



*Ms S Durand
English Teacher*



117 Liverpool Rd, Ashfield
Tel: 9798 6620
Email: ashfieldbo-h.school@det.nsw.edu.au



10MAG PUMPS UP THE VOLUME! ... AND SURFACE AREA

#ASHFIELD

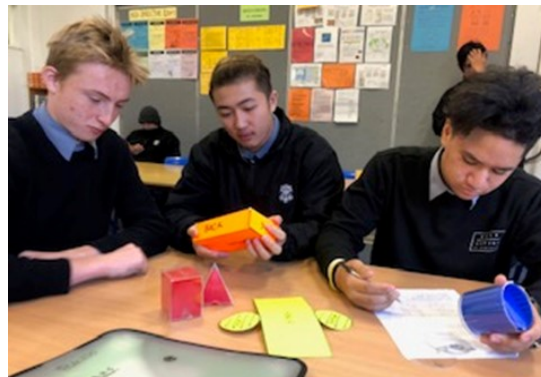
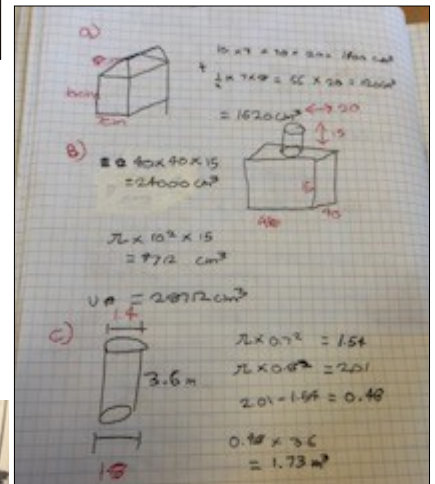


The students of Maths 10MAG have really connected with the units of work, Volume and Surface Area. Students enjoyed the hands on nature of the topics, demonstrated by some excellent work in class and some very good assessment results. The boys also had some fun constructing a bath and working out how much water we really take for granted (200L for the average bath).

HOW MANY LITRES OF WATER IN A BATH???

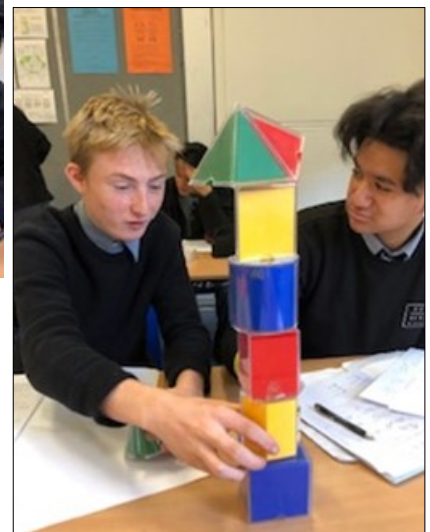
Using volume to try and save water.

Students constructed a makeshift “bath” and calculated the volume based on an average bath size (1800 x 750 x 400). Students needed to take displacement into account.



Students used “hands on” materials to determine dimensions for calculations of volume and surface area for different solids.

Mr Keating
Mathematics Teacher



117 Liverpool Rd, Ashfield
Tel: 9798 6620
Email: ashfieldbo-h.school@det.nsw.edu.au



SCIENCE WEEK SPECTACULAR

This week Australia celebrated National Science Week - a week dedicated to the amazing discoveries, knowledge and technology that Science has provided. Science plays a vital role in all our lives, from the way our bodies work to the way our cars are powered to how biodiversity thrives in the Earth's ecosystems.

In order to celebrate Science Week at ABHS, the students undertook a variety of exciting experiments. They explored rocketry using the water pump rocket launcher and investigating the impact of changing pressure and angle of launch on the trajectory and speed of the rocket. Students explored chemical reactions through experiments like the carbon snake, the highly exothermic reaction between potassium permanganate and glycerol, elephant's toothpaste, teabag rockets and the reaction of sodium with water. Students also got the opportunity to observe and interact with chickens as part of Science Week, learning about their life cycles from incubating the eggs, documenting the hatchings and monitoring the growth of the chicks.



*Ms M Prasad
Science Teacher*



117 Liverpool Rd, Ashfield
Tel: 9798 6620
Email: ashfieldbo-h.school@det.nsw.edu.au



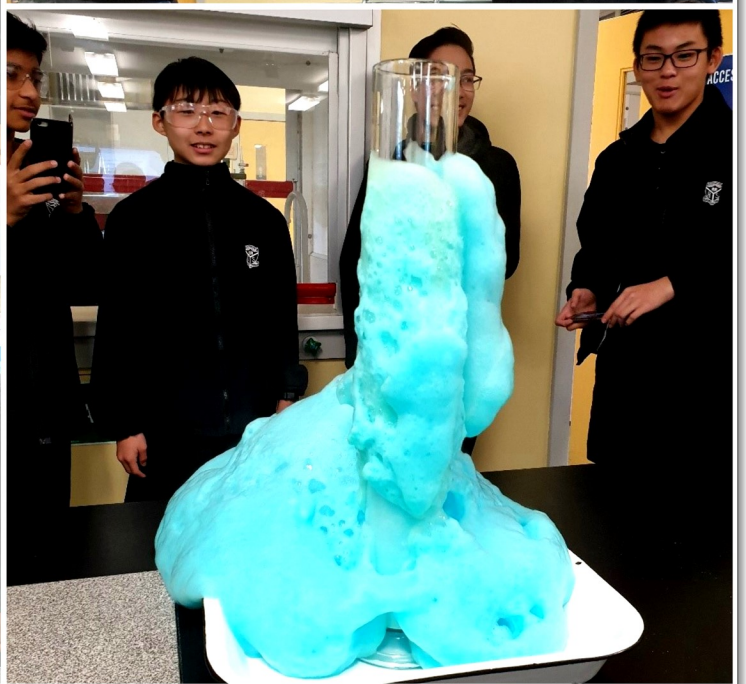
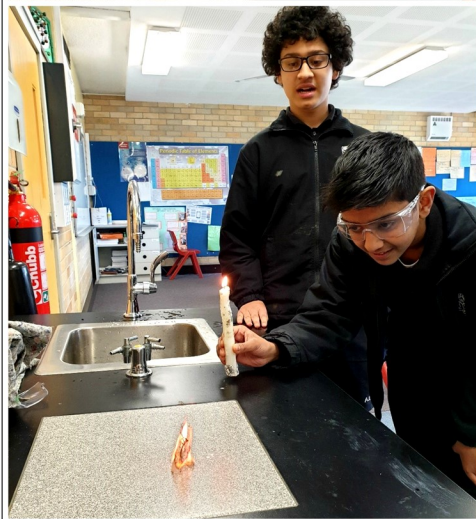
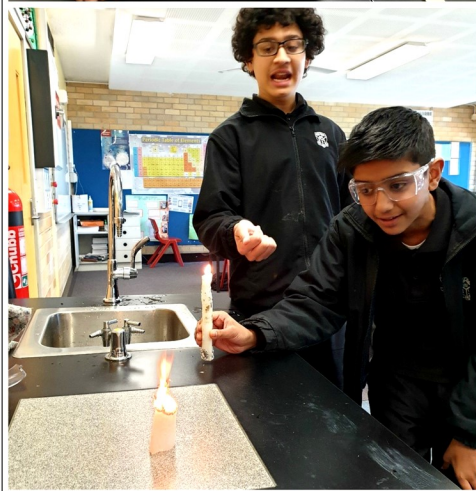
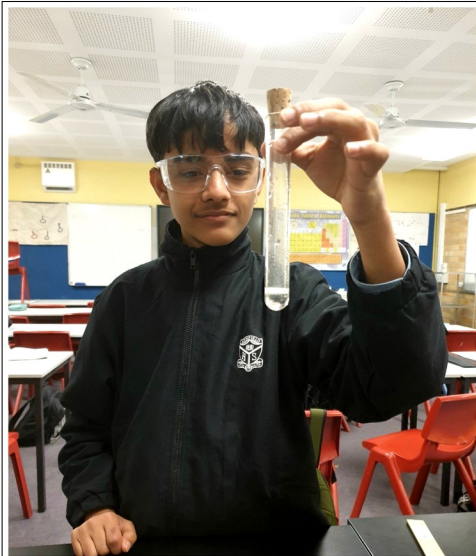
#ASHFIELD



117 Liverpool Rd, Ashfield
Tel: 9798 6620
Email: ashfieldbo-h.school@det.nsw.edu.au



#ASHFIELD



117 Liverpool Rd, Ashfield
Tel: 9798 6620
Email: ashfieldbo-h.school@det.nsw.edu.au





Photos by: Harry Ma



117 Liverpool Rd, Ashfield
Tel: 9798 6620
Email: ashfieldbo-h.school@det.nsw.edu.au



3 WEEKS IN SPRING

On Thursday 15th August, members of the Year 10 Drama, Music and Elective History classes saw a performance of '3 Weeks in Spring', a new Musical to hit the stage about the Anzac legend; in particular, the medic Simpson and his Donkey. For the majority of the boys, this was the first time that they had seen a musical. It was a treat to take the students to the majestic State Theatre, which gave them a taste of the theatre of yesteryear. At the conclusion of the performance, each student was given a poppy for remembrance. Attached was the name of a fallen soldier from the campaign. The story gave the students an insight into the horrors of war, what it was like for the loved ones back in Australia and even gave a glimpse into the Anzac/Turkish relationship. I was puzzled how they were going to show the donkey in production. It was delightful to see a mechanical, life size donkey manipulated by two puppeters. It was great to accompany this group of young men who represented Ashfield Boys High so splendidly and special thanks to Mr Chatwin who supported the excursion. John Han made it his mission to collect as many poppies as he could. We joked that he was planning to audition for the next series of The Bachelor!



Ms T Small - HT CAPA



117 Liverpool Rd, Ashfield
Tel: 9798 6620
Email: ashfieldbo-h.school@det.nsw.edu.au



THE END OF AN ERA

Ashfield Boys High School has been incredibly lucky over the last five years.

It was on the eve of our first ever TheatreSports competition when Dave Callan entered our School Hall, and upon seeing our 2014 Year 9 Players, he offered to provide these novices with a warm up. From this moment a connection was triggered.

Dave has continued to work with the ABHS TheatreSports players for the last 5 years. He has taken our Junior Team to a Grand Final in 2017, where they placed third, and our Senior Team to a Grand Final in 2018, where they also placed third.

This year both our Senior and Intermediate teams have made it to the Semi Finals, which in itself is an excellent achievement.

David has coached our TheatreSports boys, worked with our Shakespeare Carnival Program and run Open nights in the Drama room during his time with us. We are so grateful for the effort, energy and passion he always brings to the learning environment. The students are motivated, inspired and encouraged by him. The moment he flourishes into a room he has their undivided attention.

However, unfortunately due to Dave's ever increasing acting commitments he is unable to continue to tutor our boys. His dedication to ABHS and the TheatreSports program has been the reason our students are so eager to explore this creative, imaginative and literacy based co-curricula program. We are so grateful for what he has given to our students and our school, he will be immeasurably missed.



*Ms A Whitting
Drama Teacher*



117 Liverpool Rd, Ashfield
Tel: 9798 6620
Email: ashfieldbo-h.school@det.nsw.edu.au



MACBETH, THE “SCOTTISH PLAY”

Year 10 will soon be entering the Elizabethan Era, engrossing themselves within the world of Shakespeare and Macbeth. This week, a large group of the Year 10 cohort were invited to go see the Bell Shakespeare production of Macbeth at the Sydney Opera House, Circular Quay.

To start the day, students had the chance to wander around Sydney’s best known landmarks, taking in the atmosphere, and most importantly, the sunshine.

To engage with the literature, and the upcoming Elizabethan English focus, the boys were then given the opportunity to experience the story on stage before delving deep into the discussions and understandings of this particular time. This trip’s focus was to share literature in a dramatic form, allowing the boys to focus, further develop their language skills, and share their thoughts on what they liked and disliked.

Overall, the excursion was a resounding success, having the boys leave with insightful comments on the production, and gaining experiences some had never had before.



A. Karagiannidis – English Faculty



117 Liverpool Rd, Ashfield
Tel: 9798 6620
Email: ashfieldbo-h.school@det.nsw.edu.au

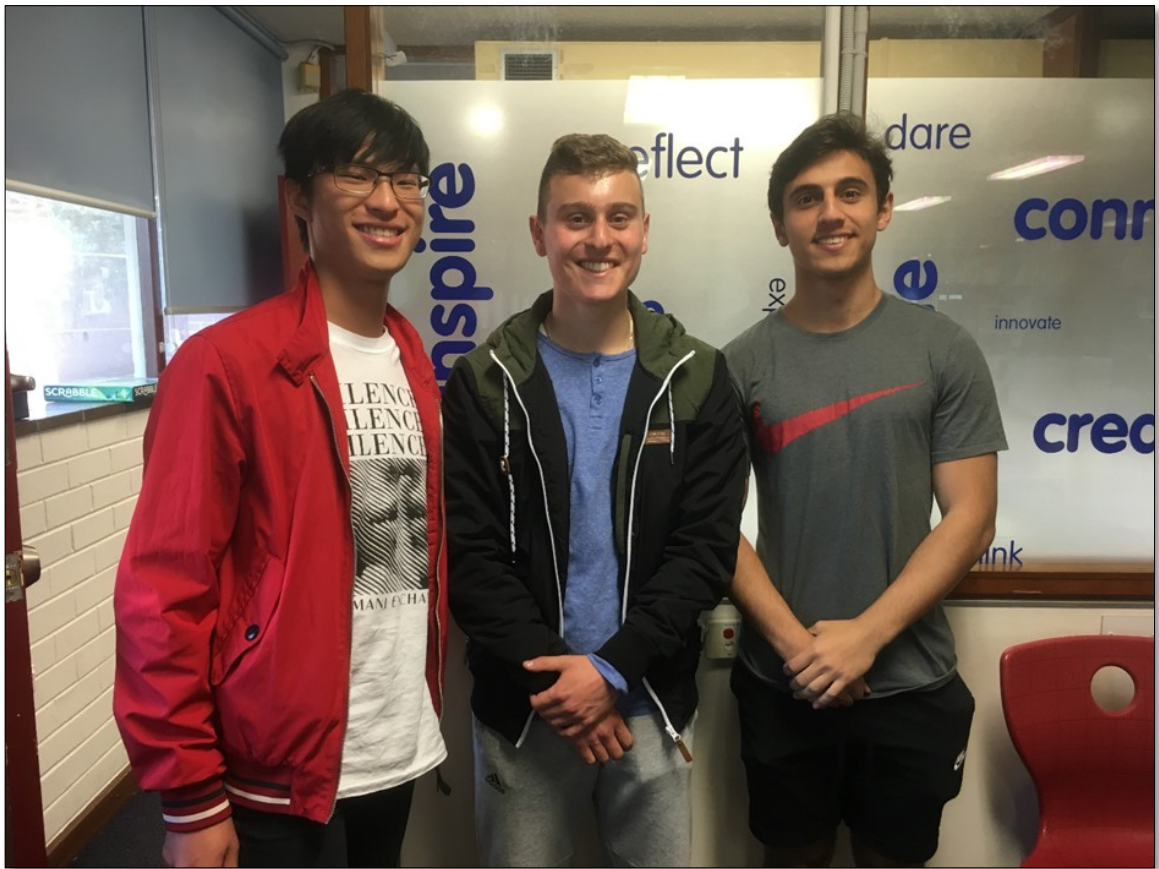


RETURNING STUDENTS HELPING AT HOMEWORK CENTRE

It is fantastic to have 5 students who graduated either in 2018 or 2017 who are helping out at the homework centre. All the boys had outstanding results in their HSC and are looking forward to working on one to one with your sons.

Why have they joined our team I hear you ask? For some students it is easier to ask someone who has recently graduated as they feel they are more empathic to their questions. The teachers will still be present it just means we can offer more individualised help.

There are spots available if your son would like to join us.



Pictured above are Adrian Anderson-Lam, Jordan Nicolopoulos and Mohamad Elzein.

Ms Gorton



117 Liverpool Rd, Ashfield
Tel: 9798 6620
Email: ashfieldbo-h.school@det.nsw.edu.au





On Tuesday 10th September Year 10 students have been invited to attend the “bstreetsmart – safer drivers” event at Qudos Bank Arena. Your permission note is due back to Mr Phillips, please be sure to hand it to him to avoid missing out. Below is some important information regarding the day – more information to come.

Qudos Bank Security

A reminder, due to new anti-terrorism laws, Qudos Bank Arena **will not allow any school bags or back packs be brought into the arena**. Mobile phones are permitted & lunches should be brought in a plastic bag. All other bags will be inspection and checked in. Teachers may have a bag 30cm by 30cm only.

Student Eating

Please ensure students eat breakfast prior to arrival to prevent fainting during the crash scenario.

We have created an outside courtyard off the Main Foyer that will be available for students to eat their lunch. The Club Level will also be an “eating only” zone during the lunch break.

Please encourage students to bring their own lunch to avoid queues at food outlets and to allow time at interactive displays.

Also please advise students **NO UBER EATS** are permitted into the Qudos Bank Arena. Any food delivered will be refused entry and destroyed.

Ms T Brown - HT Welfare



117 Liverpool Rd, Ashfield
Tel: 9798 6620
Email: ashfieldbo-h.school@det.nsw.edu.au



LORD OF THE FLIES THEATRE EXCURSION

On Wednesday 9 Rose travelled to Roslyn Packer Theatre at the Sydney Wharf to watch 'Lord of the Flies' by William Golding, adapted by Nigel Williams and directed by Kip Williams. This excursion was to enable students to see a visual representation of the adaptation of the text they are currently studying in English.

STC Director Kip Williams believes that *"commonly the themes in this play are viewed as Golding's comment on anarchy and that humans without social structure will fall into chaos..but rather he see it as being about toxic masculine cultures".*

The opportunity to view a production that challenged the students to reflect on the ideas presented initially by Golding and now through William's interpretation will enhance their ability to look at texts from their own context, the context of others and develop their written discussion of representation.

'When we got there, we were almost immediately welcomed into the theatre and offered an excellent view of the stage, although I believe that from any seat you would have a fine view and be able to see all actors at most times. With little delay the play started, presenting an interesting perspective of the setting for the first scene. This performance would have been easy to understand for anyone, if they had wanted to randomly attend, however, it had helped that I had previously read the text.'

The underlying context of the play is World War 2 and is about a group of boys who are sent away from London for their safety, but are stranded on an island with no adults. The play explored ideas of social hierarchy, human nature, and death. It was a very interesting play which expanded my view on human nature.

The play was performed with exquisite accuracy and extremely powerfully. There were many moments which evoked strong emotions in me, and also the rest of the audience. 'The Lord of The Flies' play was a very pleasing excursion that I'm happy our class could attend.'



Andrew Mathews 9R



117 Liverpool Rd, Ashfield
Tel: 9798 6620
Email: ashfieldbo-h.school@det.nsw.edu.au





ASHFIELD BOYS HIGH SCHOOL

117 Liverpool Road, Ashfield NSW, 2131
Telephone: 9798 6620 / 9798 5520
Fax: 9716 8004
Email: ashfieldbo-h.school@det.nsw.edu.au

INFORMATION ABOUT UPCOMING YEAR 7 CAMP 2019

Dear Parent/Guardian

A two night camp has been arranged for our Year 7 students to the 'Sydney Academy of Sport and Recreation' at Narrabeen.

Attending the camp is an extraordinary experience that builds our boys' self-confidence, teamwork and leadership skills and strengthens rapport with each other and their teachers. The boys are given many opportunities to participate in challenging activities which give them a powerful sense of achievement and a chance to discover new skills, build empathy, determination and independence. Attending the camp is an excellent chance to take part in a wide range of recreational activities and an opportunity to strengthen friendships and make new friends.

Details for your information:

| | | |
|--------------------------|--|-------------------------|
| When: | Term 4, Week 4 (Wednesday 6th November to Friday 8th November, 2019) | |
| Cost: | The total cost will be approx. \$350 | |
| Deposit: | A non-refundable deposit of \$150 payable by Monday 12th August 2019 (Week 4 of this term) to confirm your son's attendance at the camp and to allow us to finalise numbers. | |
| Payment Schedule: | To help pay for the camp over a period of time the school will accept the following payments to be made. | |
| | Week 4 Friday 16 August, 2019 | \$150 Deposit |
| | Week 7 Friday 6 September 2019 | \$100 Second payment |
| | Week 10 Friday 27 September 2019 | \$100 Final payment |

Payments can be made online via Ashfield Boys High School's website **\$ Make A Payment** tab. POP reference no: **455505** Description: Year 7 Camp 2019. Or at the payments office by cash, cheque or Eftpos.
Please note: All monies paid are non-refundable

Travel: A private bus charter will pick up from ABHS on Wednesday morning and return to ABHS on Friday at approximately 3pm.

Meals: All meals are provided beginning with lunch on Wednesday and finishing with lunch on Friday.

| | | |
|--------------------------------|---|---|
| Supervision: | The students will be accompanied by teachers from ABHS; as well as having the care and expertise of Camp staff. | |
| Activities may include: | <ul style="list-style-type: none"> • Rope courses • Bushwalking • Rock climbing • Abseiling | <ul style="list-style-type: none"> • Field games • Raft building • Canoeing • archery |

We enthusiastically encourage all Year 7 students to attend camp as it is such a worthwhile experience.

If you have any questions regarding the Camp or any of the arrangements please contact the Year 7 Adviser, Ms Sianne Durand on 9798 6620 (Voice mail extension 215).

As well as the payment arrangements and permission note, further details on camp activities and other relevant information will be forwarded to you in the coming weeks. In the meantime, you may like to look at the website: <https://sportandrecreation.nsw.gov.au/facilities/sydneyacademy>

Kind Regards

Mr D Hopwood
Principal

Ms S Durand
Year 7 Adviser



117 Liverpool Rd, Ashfield
Tel: 9798 6620
Email: ashfieldbo-h.school@det.nsw.edu.au



ADMINISTRATION INFORMATION UPDATE

Dear Parent/Carers,

For your convenience we have included several forms on the [Ashfield Boys High School Website](#), for you to download .

Please click on the [Notes](#) tab to find :

- Absence notes
- Late notes
- Early leavers note
- Student change of address form
- Leave application

Please complete these forms where necessary and return to the Administration Office.

PAYMENT OFFICE HOURS-STUDENTS

Before School
Recess
Lunch

2.00pm is the cut-off time for both students and parents, to enable end of day processing.

Our preferred method of payment is online via School Bytes or the school website. We ask that you consider online payment before you send cash, cheques or credit card payments to the school office.

Online payment provides you with an immediate receipt for payment.

Students are to carry their ID cards with them at all times when dealing with the Administration Office (**Rolls Desk**) and the **Library**.

We will soon be implementing a new photocopying system.
Students will not be able to photocopy at school without a card. Details to follow.

Lost cards incur a replacement fee of \$10.



117 Liverpool Rd, Ashfield
Tel: 9798 6620
Email: ashfieldbo-h.school@det.nsw.edu.au



DONATIONS NEEDED OF JUNIOR TIES



If any families have a junior tie sitting in a cupboard we have boys in need of second hand junior ties. Could ties be donated to Ms Gorton in her office in G Block that would be fantastic!

Ms Gorton



CGHS P&C ASSOCIATION PRESENTS



COMEDY NIGHT

SAT 17 AUGUST - 7PM
CANTERBURY GIRLS HIGH SCHOOL



ANDREW BARNETT



REBECCA DE UNAMUNO



BEN KOCHAN



EMMA ZAMMIT

[TRYBOOKING.COM/BDMEP](https://trybooking.com/bdmeP)



117 Liverpool Rd, Ashfield
Tel: 9798 6620
Email: ashfieldbo-h.school@det.nsw.edu.au



| RECREATIONAL SPORT - WEEK 3 | | | | | |
|-----------------------------|------------------------|----------------------|--------------------------|-------------------------------------|-------------|
| Assembly Point | Sport | Venue | Coach | Assemble and Sit in Year 7 quad at: | Finish Time |
| A | Badminton | Olympic Park | Pearce | 11:45 | 14:31 |
| C | Futsal | ABHS Oval | Morris | 12:34 | 14:31 |
| E | Table Tennis | Olympic Park | Lu | 11:45 | 14:31 |
| G | Basketball Years 7-8 | Centenary Park | Atkins | 12:34 | 14:31 |
| K | Basketball Years 9-10 | Bill Peter's Reserve | Karagiannidis | 12:34 | 14:31 |
| O | Lawn Bowls | Ashfield Park LBC | Ma | 12:34 | 14:31 |
| Q | Multi Sport Years 7-8 | Hammond Park | Pieterse Chu | 12:34 | 14:31 |
| S | Multi Sport Years 9-10 | Hammond Park | Mahmud Wang | 12:34 | 14:31 |
| U | Power Walk Years 7-8 | Local Area | Jones Durand | 12:34 | 14:31 |
| U | Power Walk Years 9-10 | Local Area | Belle - Page Dobrowolski | 12:34 | 14:31 |
| W | Ultimate Frisbee | Centenary Park | Lam | 12:34 | 14:31 |
| Y | Theatre Sport | D11 | Whitting | 12:34 | 14:31 |
| 14/15 | Outdoor Fitness | Ashfield Park | Phillips Prasad | 12:34 | 14:31 |

| | | | Start | Finish |
|-----|---------------------------|--------------------------|-------|--------|
| E 3 | Injured or sick with note | Executive/Markou/Chatwin | 12:34 | 14:31 |



| RECREATIONAL SPORT - WEEK 2 | | | | | |
|-----------------------------|------------------------|----------------------|-------------------------------|-------------------------------------|-------------|
| Assembly Point | Sport | Venue | Coach | Assemble and Sit in Year 7 quad at: | Finish Time |
| A | Badminton | ABHS Quiet area | <i>Pearce</i> | 12:34 | 14:31 |
| C | Futsal | Olympic Park | <i>Morris</i> | 11:55 | 14:31 |
| E | Table Tennis | Olympic Park | <i>Lu</i> | 11:55 | 14:31 |
| G | Basketball Years 7-8 | Bill Peter's Reserve | <i>Atkins</i> | 12:34 | 14:31 |
| K | Basketball Years 9-10 | Centenary Park | <i>Karagiannidis</i> | 12:34 | 14:31 |
| O | Lawn Bowls | Ashfield Park LBC | <i>Chatwin</i> | 12:34 | 14:31 |
| Q | Multi Sport Years 7-8 | Hammond Park | <i>Pieterse Chu</i> | 12:34 | 14:31 |
| S | Multi Sport Years 9-10 | Hammond Park | <i>Mahmud Wang</i> | 12:34 | 14:31 |
| U | Power Walk Years 7-8 | Local Area | <i>Jones Durand</i> | 12:34 | 14:31 |
| U | Power Walk Years 9-10 | Local Area | <i>Belle - Page Dobrowski</i> | 12:34 | 14:31 |
| W | Ultimate Frisbee | Centenary Park | <i>Lam</i> | 12:34 | 14:31 |
| Y | Theatre Sport | D11 | <i>Whitting</i> | 12:34 | 14:31 |
| 14/15 | Outdoor Fitness | Ashfield Park | <i>Phillips Prasad</i> | 12:34 | 14:31 |

| | | |
|---|--|---|
| <p>Futsal – Olympic Park Quaycentre booking times:</p> <p>7,14,28 August 4 September – Sports Hall 25 September 16 October 6,27 November NBA - December</p> | <p>Table Tennis- Olympic Park Sports Hall booking times:</p> <p>7,14,21,28 August 4,11,18,25 September 16,23,30 October 6,13,20,27 November 4,11 December</p> <p>All played on Court C</p> | <p>Badminton - Olympic Park NSW Netball booking times:</p> <p>7,21,28 August 4 September 16,23 October 6,13,27 November 4,11 December</p> |
|---|--|---|



117 Liverpool Rd, Ashfield
Tel: 9798 6620
Email: ashfieldbo-h.school@det.nsw.edu.au

