

ASHFIELD BOYS HIGH SCHOOL



YEAR 12 ASSESSMENT POLICY & COURSE SCHEDULES

2022 Higher School Certificate

Table of contents:

Assessment Policy	
Contents	3
HSC Assessment Overview	4/5
VET	5
Illness & Misadventure	5
Appeals Surrounding Assessment Procedure	6
Academic Integrity	7
Course Requirements: N Award Process	8
Disability Provisions	8
Senior Learning Centre	9
NESA	10
HSC Key Words	10
Faculty Course Responsibilities	11
Assessment Scope & Sequence & Assessment Grids	
Ancient History	12
Biology	13
Business Studies	14
Chemistry	15
Construction	16
Drama	17
Economics	18
Engineering Studies	19
English Advanced	20
English Extension 1	21
English Extension 2	22
English Standard	23
Food Technology	24
Geography	25
Industrial Technology Multimedia	26
Legal Studies	27
Mathematics Advanced	28
Mathematics Extension 1	29
Mathematics Extension 2	30
Mathematics Standard 1	31
Mathematics Standard 2	32
Modern History	33
Music	34
Physics	35
Software Design & Development	36
Studies of Religion	37
Visual Arts	38
Appendices	
Appendix A - Illness / Misadventure Sample Form	39
Appendix A - Illness / Misadventure Form	40
Appendix B - Overseas or Interstate Trips	41
Appendix C - HSC Assessment Appeals Committee Form	42
Appendix D- HSC Rank Appeal Flowchart	43
Appendix E- NESA N Determination Flowchart	44
Year 12 Assessment – Schedule Summary	45 - 46

HSC Assessment Overview

In order to progress to your Year 12 Higher School Certificate year, you must have completed your Preliminary course in any individual subject satisfactorily. The Principal will be asked to confirm that you have satisfactorily completed Preliminary course requirements before your entry for the HSC can be declared valid. Most School Preliminary courses will be completed by Term 3, and you will then begin work on your HSC course work which will be included in your HSC examination.

School Assessment

There are some aspects of your courses that cannot be adequately assessed through examinations, such as practical work in Science, Drama, Music and oral work in English. Your school assessments are designed to measure these achievements as well as your achievements in examinations. Your school assessments will measure your actual performance in the whole course. In Year 12, your HSC subject assessment marks are submitted to NESA. Your school assessment marks are worth **50%** of your HSC.

Satisfactory Completion of a Course

To get your HSC in a subject, you have satisfactorily met course requirements. "Satisfactory completion" means that, in the Principal's view, there is sufficient evidence that you have:

- **followed the course** developed or endorsed by NESA;
- applied yourself with **diligence** and **sustained** effort to the set tasks and experiences provided in the Preliminary or HSC course by the school;
- **achieved some** or **all** of the course outcomes;
- attended school regularly so that course completion requirements can be met. As a general rule, an attendance rate of **at least 85%** would be expected.

Pattern of study to qualify for the HSC

To qualify for the HSC, you must study a pattern of Preliminary and HSC courses. You must check that your Preliminary pattern of study included:

- at least **12 units** of which **6 units** must be from Board-developed courses;
- at least **2 units** of English

Your HSC pattern of study must include at least **10 units**, including two units of English.

Assessment Requirements for Board Developed Courses and Board Endorsed Courses

The assessment marks submitted to NESA are devised from assessment tasks and, may include reference to performance across the year, set in accordance with the school assessment program for each course. Marks must be calculated on the

basis of the mandatory assessment components and weightings found in the syllabus for each course. The assessment marks **provide the rank order of students** and the relative differences between students based on their performances in the assessment tasks.

School Assessment Tasks

School-based assessment tasks are linked to standards because the tasks focus on outcomes, they are valid instruments for what they are designed to assess, and where appropriate, the marking guidelines are related to the wording of the outcomes and the performance standards.

At the end of each major examination in Year 12 you will be provided with your ranking within the course at that time.

Reports will be available on a regular basis. Each report will indicate your ranking for each course at that time.

The HSC Assessment Marks

Ashfield Boys High assessments are provided to the NESA for each Board Determined Course studied at HSC level by each student.

Assessments for Board Developed Courses are moderated by NESA against the marks gained in the HSC examination. This process ensures comparability between the assessment marks submitted by each school. The mark submitted by the school is not the mark which will appear on your HSC, but the rank order remains the same.

The school is not permitted to tell you your final assessment mark in Year 12. You will be told your rank within your course group.

Course Assessment Schedule

It is your responsibility to check with the relevant Head Teacher if any areas of the course schedule need clarification, or if you do not have a course assessment schedule for a subject which you are studying.

The course assessment schedule is mandatory and is **not negotiable**. It contains information about the set tasks in each component of your course. The course assessment schedule also informs you of approximately when the various assessment tasks will take place, and tells you the weighting of each task.

The date of each assessment task will be provided by the classroom teacher, **in writing**, at **least two weeks prior to the task**. **Students must sign for their task notification**.

If a student is absent on the day an Assessment Task Notification is handed out, it is the student's responsibility to find their teacher or Head Teacher of the faculty to receive and sign for the Notification on the student's first day of return to school.

Vocational Education and Training (VET) Courses

Vocational Education and Training (VET) courses are offered as part of the Higher School Certificate (HSC) or Record of School Achievement (RoSA).

Public Schools NSW, Ultimo operates as a Registered Training Organisation (RTO 90072) to deliver and assess VET qualifications to secondary students.

Board Developed VET courses are classified as Category B subjects and ONLY ONE may contribute to the calculation of the Australian Tertiary Admission Rank (ATAR). These courses have an optional HSC examination. Students wishing to include a VET course in the ATAR calculation must sit the HSC examination.

Board Endorsed VET courses have specified workplace requirements and include industry specific mandatory work placement (35 hours per 120 Hours delivery) or occasional simulated workplace hours of delivery) or occasionally simulated workplace hours at school.

Assessment in all VET courses is competency based. The student is assessed on what they can do (the skills) and what they know (the knowledge) that will equip them in the workplace. Students who have successfully achieved competency will have the skills and knowledge they need to complete workplace activities in a range of different situations and environments, to an industry standard of performance that is expected in the workplace.

Competency-based training is based on performance standards that have been set by industry. Competency-based assessment materials are designed to determine if each learner has achieved all the outcomes (skills and knowledge). Students will receive documentation showing the competencies achieved for the VET course undertaken. Students in VET courses must be able to demonstrate competence regardless of disability. The principles of *HSC: All My Own Work* apply to all Stage 6 VET courses, including early commencement in Stage 5.

Assessment whilst on Work Placement

If a student is required to complete an assessment whilst they have work placement, it is the responsibility of the **student to notify the Head Teacher** of this once they have received their Work

placement student records. Student should use the form/Appendix F to complete this process.

Failure to do so will result in the student receiving zero mark for the scheduled assessment.

Illness and Misadventure

Student attendance before an assessment task

Students must be **present and attend all timetabled lessons, the day before and the day of the assessment task due date. Failure to do so will result in a zero mark.**

Student is absent from an assessment task due to illness

If a student is sick and cannot attend on the day before, the day of the task or date a task is due, the student is to:

- **complete an illness/misadventure form** (Appendix A), with an attached doctor's certificate, and present it to the Head Teacher on the **first day of return** to school.
- The doctor's certificate should state the students full name and state that (students name) 'was unfit to attend the assessment task on (date)

(e.g. – John Brown was unfit to attend the assessment task – English Standard Multimodal Task on 24/04/21.)

This must be from a Registered Medical Practitioner with a Medicare Provider Number. Post-dated doctor's certificates will not be accepted. The task **must be submitted at this time** if it is a hand in task or an appropriate time is **negotiated** to complete the task with the Head Teacher for examinations and oral presentations.

Student is absent due to a misadventure

Misadventure refers to an event beyond the student's control which allegedly prevented the student from attending the assessment task or school on the date a task was due.

Following failure to complete an assessment task at the due time, the student is to:

- **notify the school by phone** on 9798 6620 on the day of the task or as soon as possible following this date.
- **submit an illness / misadventure form** (Appendix A), with appropriate supporting documentation, to the head teacher on the **first day of return to school** to negotiate alternative arrangements. The task must be **submitted at this time if it is a hand in** task or an appropriate time is negotiated to complete

the task with the Head Teacher for examinations and oral presentations.

An extension of time may be provided or a mark may be awarded based on a substitute task. Where there is no valid reason for not completing an assessment task, a zero mark will be recorded for that task.

Students who complete the assessment task and suffer illness/misadventure

Students may lodge an illness/misadventure appeal in writing if they believe that circumstances **immediately prior to or during the assessment task**, which were beyond their control, significantly diminished their assessment performance.

In such cases, students need to **complete the Illness/ Misadventure appeal form (Appendix A) and provide documentary evidence** such as doctor's certificate, clearly detailing and supporting the illness or misadventure. The provision of such documents does not dictate the outcome of the appeal.

Students should submit this appeal to the Head Teacher on the next day they return to school.

Hand-In tasks

Hand-in tasks should be submitted to the classroom teacher **or if class teacher is absent the Head Teacher** as specified on the notification of the assessment task on the due date and during the allocated lesson time. All students **must personally** sign off that they have handed in, or completed the task.

Alternatively, if a student is absent due to illness or misadventure then an illness/misadventure form accompanied by appropriate supporting documentation i.e. medical certificate and the assessment task should be submitted to the teacher/Head teacher on the **first day that the student returns to school**.

If an assessment task is submitted late, and there is no successful illness / misadventure appeal, students will receive a zero for that task. Students should still submit the task to gain necessary feedback.

Oral Presentations

Oral presentations should be submitted to the teacher/faculty as specified on the notification of assessment. A copy of the oral presentation must be submitted on the due date, generally being the first day that the speeches begin, during the lesson time.

A zero mark will be awarded if the task is submitted after the allocated lesson time unless an illness and misadventure form is submitted with the appropriate supporting documentation such as a medical certificate.

Technology and assessment tasks

Technology and/or computer equipment failure are not valid grounds for misadventure involving the late submission of assessment tasks.

To assist students in the utilisation of technology, the following guidelines should be considered:

- always complete work before the deadline. This enables appropriate measures to be taken in the event of equipment failure.
- Back-up files regularly.
- Print out copies of drafts and keep them while the assignment is in progress.
- Bring a copy of the file to school by either email, USB, CD.
- Email the task to yourself

Appeals Surrounding the Assessment Procedure

Grounds for an appeal

The appeal concerning assessment procedures may only be based on the assessment process and not on individual student related issues such as illness or misadventure.

While a teacher may choose to review the mark allocated for a task or part of a task, the professional judgment of a teacher is not grounds for an appeal.

Appeals Process

When a student feels that a decision applied to his work is not consistent with the school's assessment policy and procedures he may appeal. The **first appeal MUST be to the Head Teacher**.

Where a student feels that the appeal to the Head Teacher has not been heard appropriately, he may appeal to the Deputy Principal/ Principal to determine if:

- the weightings specified by the school in its assessment program were followed and conform with the Board's requirements as detailed in the syllabus;
- the procedures used to determine the final assessment marks conform with the issued assessment program; and,
- there are no computational or other clerical errors in the determination of the assessment mark.
- A written appeal must be lodged to the Deputy Principal within 7 calendar days of the previous appeal to Head Teacher.
- The Appeals Committee will comprise of the Deputy Principal, and two Head Teachers from a different faculty.
- If the student feels that the Appeals Committee has not given procedural fairness, then the student can lodge an appeal with the Principal.

- At all times, when lodging an appeal, the student is entitled to have a support person present.
- While a teacher may choose to review the mark allocated for a task or part of a task, the professional judgement of a teacher is not grounds for an appeal.
- If the student is concerned about their rank for any or each subject, then they follow the procedures listed in the flow chart. (Appendix D)

If not satisfied with the school's decision, a student may make a subsequent appeal to NESAs. NESAs will consider only whether the weightings, the procedures and the correct computations were made as detailed in the dot points above. There is no appeal against the marks awarded for individual assessment tasks.

Academic Integrity

NESA has strict requirements concerning the integrity of ownership of work submitted. These are mirrored by the school's expectations. All work presented in assessment tasks and examinations (including submitted works and practical examinations), must be your own.

Defining Malpractice

Malpractice is any activity undertaken by a student that allows them to gain an unfair advantage over others or places other students at a disadvantage. It includes, but is not limited to:

- presenting it as one's own
- using material directly from books, journals, CDs or the Internet without reference to the source
- building on the ideas of another person without reference to the source
- buying, stealing or borrowing another person's work and presenting it as one's own
- submitting work to which another person, such as a parent, coach or subject expert has contributed substantially
- copying someone else's work in part or in whole, and
- using words, ideas, designs or the workmanship of others in practical and performance tasks without appropriate acknowledgement
- paying someone to write or prepare material
- breaching school examination rules
- using non-approved aids during an assessment task
- not making a genuine effort with an assessment task
- contriving false explanations to explain work not handed in by the due date
- assisting another student to engage in malpractice.
- Students are advised that they should acknowledge input from another student or

teacher or tutor within their bibliography and that copies of previous tasks by other students are kept as records for future years.

Strategies to ensure the authenticity of student responses to tasks.

All students entering stage 6 studies will have completed The HSC: All My Own Work program designed to help students to follow the principles and practices of good scholarship. This includes understanding and valuing ethical practices when locating and using information as part of their HSC studies.

Misconduct in formal examinations and other assessment tasks

Misconduct during any task or formal examination may be regarded as malpractice. **Zero marks may be awarded to students who are involved in misconduct during an examination or other assessment tasks.** Misconduct refers to any form of behaviour or activity that may fall under the definition of malpractice, is not consistent with school rules or causes disruption to assessment procedures.

All class tasks including formal examinations must be attempted seriously. **Non-serious attempts** or offensive language in answers will be referred to the Head Teacher and/or the Principal/Deputy Principal and may be awarded a zero mark for that task.

Managing Issues of Malpractice

Issues of malpractice need to be investigated by the Head teacher and in more serious cases reported to the Principal/Deputy Principal.

Where the malpractice is serious and where penalty or zero mark is to be awarded, the student will be advised of the issue and the school's intention to manage a course of action. The student will be given an opportunity to appeal the outcome of this decision.

Students are made aware that sharing/showing their hand-in task to other students prior to it being submitted may lead to issues construed as malpractice and lead to a zero mark for that task. Students are encouraged not to share the substance of a hand-in task with other students. Likewise, students who may receive a substitute task through an appeal outcome are not to make any effort to gain knowledge, wording or content of the original task.

NESA Register of Malpractice in HSC Assessment Tasks

Types of malpractice in HSC assessment tasks may include, but are not limited to:

- Being in possession of unauthorised notes or electronic devices during a test or examination.
- Using the words, ideas, designs or workmanship of others without acknowledgement.
- Copying from another student.
- Paying someone to write or prepare an assessment task.

All incidents of malpractice will be registered at the school and entered onto the NESA malpractice register.

Equipment at Examinations/Tasks:

- No electronic devices (excluding NESA approved calculators) are permitted in assessments and the examination room.
- Students are advised not to bring phones or electronic devices to the exams, **they are to leave them in their bags – turned off.**
- Students must ensure they have the necessary equipment for assessments. Students are not permitted to borrow equipment during examinations.
- Pencil cases and study notes must not be in possession of students in the exam room.
- All papers, questions, booklets and answers must be handed in at the end of each exam.
- Students must not take into the examination room any books, notes, this guide, the examination timetable, any paper or any equipment other than the equipment listed in the examination timetable
- No responsibility will be taken for the safe-keeping of any unauthorised material or equipment in bags including mobile phones and other electronic devices.

Course Requirements: N Award Process

Satisfactorily completing the course

A student will be considered to have satisfactorily completed a course if, in the Principal's view, there is sufficient evidence that the student has:

- followed the course developed or endorsed by NESA,
- applied himself with diligence and sustained effort to the set tasks and experiences provided the course by the school; and,
- achieved some or all of the course outcomes.

Student Attendance

It could be determined by the Principal that prolonged or frequent absence has prohibited a student from meeting these requirements. Students who are concerned about their attendance with respect to meeting course requirements should discuss this with the Deputy Principal / Principal.

For all absences greater than three days, students are to complete an **Exemption from school form**. These forms are available from the Administration office.

Absences for **overseas or interstate travel** are strongly discouraged and can impact on the student's ability to satisfactorily complete course requirements. Fee-paying international students may also jeopardise their visas and right to remain in Australia.

Different subjects have different prerequisites, e.g. practical subjects require a set number of hours of practical work. Overseas or interstate travel may have a negative impact on this.

If considering overseas or interstate travel, students are to:

- Explain to his family the impact the travel will have on the HSC;
- complete the *Exemption from school* form and attached a copy of the airline ticket;
- **Appendix B Overseas or interstate trips** for each subject studied. This form is to be signed by the head teacher of each subject, parent and year advisor.
- Both forms are to then be submitted to the Principal for approval at least three weeks in advance.

Failure to complete or submit assessment tasks

If a student does not have a valid reason for failing to complete or submit an assessment task a zero mark may be recorded for that task. The student and his parents will be advised, in writing, of this.

Non-serious attempts

Students studying an HSC course must make a **genuine attempt to complete course requirements**. These requirements include students applying themselves with diligence and sustained effort to the set tasks and experiences provided in the course by the school, regardless of whether or not these tasks contribute to the final assessment mark. It is a matter for the teacher's professional judgement to determine whether a student has made a genuine attempt to complete these requirements.

Communicating course requirement concerns

Students should receive meaningful feedback in all aspects of their coursework. This may be in the form of marks, grades and/or oral and written comments. Comments may be informed by the performance band descriptions though should they not be reported or graded against these bands. The feedback given for tasks that do not contribute to the final HSC assessment mark should assist

students in preparation for tasks that are part of the HSC Assessment program.

Students must make a genuine attempt at assessment tasks that, combined, contribute more than 50% of the total assessment marks for that course.

If it appears that a student is at risk of not meeting the internal assessment requirements in a course, a written warning letter must be given to the student and their parents notifying of a potential for an 'N determination' in the course.

The letter will

- advise the student of the issue giving adequate time for the problem to be corrected;
- specifying details of action including a timeframe required by the student;
- alert the student to the possible consequences of an 'N' determination, and
- request from the student and his parent a written acknowledgement of the warning;

If the student is still at risk and is failing to address the issue detailed in the initial letter, a second follow-up warning letter will be issued.

On the first warning letter, a student will be interviewed by the Head Teacher. On the second warning letter, the Head Teacher interviews the student and contacts the parents by phone or interview.

An N determination in a course may place the award of the Higher School Certificate in jeopardy and the individual course will not appear on the students' *Record of Achievement*.

See N determination flowchart (Appendix E)

Disability Provisions for Examinations

NESA may provide disability provisions for students in the School Certificate and Higher School Certificate examinations.

NESA may approve disability provisions if a student has a special need which would, in a normal examination situation, prevent him from:

- reading and interpreting the examination questions and/or
- communicating his responses.

Principals have the authority to decide on and to implement special provisions for school-based assessments including tests. *ACE Manual 13.1*

Regardless of the nature of the special need, the provisions granted will be solely determined by the implications of that need on the student's functioning in an examination situation. *ACE Manual 13.2.*

Disability Provisions at Ashfield Boys High School

Ashfield Boys High will support students seeking disability provisions for their Higher School Certificate examinations. Where it is appropriate and suitable these provisions will also be offered to the students to complete their internal assessment component.

If a student experiences a one-off incident which affects his examination performance and requires Disability Provisions e.g. a physical injury, the Principal may elect to grant Disability Provisions for an individual task. These provisions will be issued using NESA general guidelines, however, there is no guarantee that NESA will allocate the same provisions.

Student responsibilities

Students must make an appointment with the Learning and Support Teacher (LAST) or school counsellor to formalise an application for disability examination provisions. Application forms are available from the LAST team.

Students who have been awarded disability provisions are to check with their class teacher, the arrangements for these provisions for the upcoming task.

Senior Study Centre

Ashfield Boys High School values the importance of good study habits in the achievement of potential. The Senior Study Centre is fully staffed Monday to Friday and is open Recess and Lunch. The many resources available to senior students include computers, past examination papers, numerous study guides with student samples of HSC answers and examiners' comments.

Syllabus Requirements:

Students may access the NESA Webpage: <http://www.syllabus.nesa.nsw.edu.au>

The Higher School Certificate – Some Key Words

NESA has published a glossary of words that will make the demands of questions explicit. Students will be expected to have a clear understanding of what they are required to do in each question in an assessment task or examination.

The following glossary provides the meaning of these words as they generally apply across subject areas.

Word	Definition	Word	Definition
Account	Account for: state reasons for, report on. Give an account of: narrate a series of events or transactions	Distinguish	Recognise or note/indicate or distinct or different from; to note differences between
Analyse	Identify components and the relationship between them; draw out and relate implications	Evaluate	Make a judgement based on criteria; determine the value of
Apply	Use, Utilise, employ in a particular situation	Examine	Inquire into
Appreciate	Make a judgement about the value of	Explain	Relate cause and effect; make the relationships between things evident; provide why and/or how
Assess	Make a judgement of value, quality, outcomes, results or size	Extract	Choose relevant and/or appropriate details
Calculate	Ascertain/determine from given facts, figures or information	Extrapolate	Infer from what is known
Clarify	Make clear or plain	Identify	Recognise and name
Classify	Arrange or include in classes/categories	Interpret	Draw meaning from
Compare	Show how things are similar or different	Investigate	Plan, inquire into and draw conclusions about
Construct	Make; build; put together items or arguments	Justify	Support an argument or conclusion
Contrast	Show how things are different or opposite	Outline	Sketch in general terms; indicate the main features of
Critically analyse/evaluate	Add a degree or level of accuracy, depth, knowledge and understanding, logic, questioning, reflection and qualify to (analyse/evaluation)	Predict	Suggest what may happen based on available information
Deduce	Draw conclusions	Propose	Put forward (for example a point of view, idea, argument, suggestion) for consideration or action
Define	State meaning and identify essential qualities	Recall	Present remembered ideas, facts or experiences
Demonstrate	Show by example	Recommend	Provide reasons in favour
Describe	Provide characteristics and features	Recount	Retell a series of events
Discuss	Identify issues and provide points for and/or against	Summarise	Express concisely the relevant details
		Synthesise	Putting together various elements to make a whole

SPECIFIC COURSE ASSESSMENT SCHEDULES

The HSC individual assessment programs for each subject which outline:

- The syllabus outcomes
- The components to be assessed
- The weightings of each component
- The types of tasks
- The weighting of individual tasks
- The timing of tasks

<p>Ms L Finigan Head Teacher English Faculty</p> <ul style="list-style-type: none"> • English Advanced • English Ext 1 • English Ext 2 • English Standard 	<p>Ms D Scandurra Head Teacher Science Faculty</p> <ul style="list-style-type: none"> • Biology • Chemistry • Physics
<p>Mr M Radojevic Head Teacher History</p> <ul style="list-style-type: none"> • Ancient History • Modern History • Studies of Religion II 	<p>Ms T Small Head Teacher Creative & Performing Arts Faculty</p> <ul style="list-style-type: none"> • Drama • Music • Visual Arts
<p>Mr C Zaczek Head Teacher Social Sciences Faculty</p> <ul style="list-style-type: none"> • Business Studies • Economics • Legal Studies 	<p>Mr L Alevizos Head Teacher TAS Faculty</p> <ul style="list-style-type: none"> • Engineering Studies • Food Technology <p>VET</p> <ul style="list-style-type: none"> • Construction
<p>Ms M Thomas Head Teacher Mathematics/Computing Faculty</p> <ul style="list-style-type: none"> • Mathematics Advanced • Mathematics Extension 1 • Mathematics Extension 2 • Mathematics Standard 1 • Mathematics Standard 2 • Industrial Technology Multimedia • Software Design & Development 	<p>Ms Skelton Relieving Head Teacher Admin/Languages Faculty</p> <ul style="list-style-type: none"> • Saturday Languages

**Students should address any questions or concerns
regarding a subject to the relevant Head teacher**

Ancient History

Year 12 2022

Component	Task 1	Task 2	Task 3	Task 4	Weighting
	Term 4 2021 Week 8	Term 1 2022 Week 7	Term 2 2022 Week 8	Term 3 2022 Weeks 3/4	
	Historical Analysis Core Topic: Cities of Vesuvius Pompeii & Herculaneum	Test Ancient Societies: Spartan Society to the Battle of Leuctra 371 BCs	Test Historical Period – Rome: The Julio- Claudians AD14 - 69	Trial HSC All topic areas	
Outcomes	AH12-6 AH12-8 AH12-9 AH12-10	AH12-3 AH12-4 AH12-5 AH12-6 AH12-7 AH12-9	AH12-1 AH12-2 AH12-3 AH12-5 AH12-7 AH12-8 AH12-9	AH12-1, AH12-2 AH12-3, AH12-5 AH12-7, AH12-8 AH12-9	
● Knowledge and understanding of course content	5	5	10	20	40
● Historical skills in the analysis and evaluation of sources and interpretations	10	5		5	20
● Historical inquiry and research	5	10	5		20
● Communication of historical understanding in appropriate forms		5	10	5	20
Total %	20	25	25	30	100

Biology					Year 12 2022
Component	Task 1	Task 2	Task 3	Task 4	Weighting
	Term 4 2021 Week 10	Term 1 2022 Week 8	Term 2 2022 Week 9	Term 3 2022 Weeks 3/4	
	Depth Study Building a model	Data Analysis Epidemiology	Skills Task Inheritance Problem Solving	Trial HSC Examination	
Outcomes	BIO11/12-1 BIO11/12-2 BIO11/12-3 BIO11/12-5 BIO11/12-6 BIO11/12-7 BIO12-15	BIO11/12-4 BIO11/12-5 BIO12-14 BIO12-15	BIO11/12-4 BIO11/12-5 BIO11/12-6 BIO12-12	BIO11/12-4 BIO11/12-5 BIO11/12-6 BIO12-12 BIO12-13 BIO12-14 BIO12-15	
• Knowledge and understanding	10	5	10	15	40
• Skills in Working Scientifically	20	15	15	10	60
Total %	30	20	25	25	100

Business Studies					Year 12 2022
Component	Task 1	Task 2	Task 3	Task 4	Weighting
	Term 4 2021 Week 9	Term 1 2022 Week 7	Term 2 2022 Week 6	Term 3 2022 Weeks 3/4 TBC	
	Operations Case Study	Marketing/ Operations: Business Report	Finance/Marketing Stimulus based short answers and interpretation of data	Trial HSC Examination	
Outcomes	H1, H2, H4, H5, H9	H1, H2, H4, H7, H9	H6, H8, H9, H10	H1, H2, H3, H4, H5, H6, H7, H8, H9, H10	
● Knowledge and understanding of course content	5	10	5	20	40
● Stimulus-based skills		5	5	10	20
● Inquiry and Research	10	5	5		20
● Communication	5	5	5	5	20
Total %	20	25	20	35	100

Chemistry					Year 12 2022
Component	Task 1	Task 2	Task 3	Task 4	Weighting
	Term 4 2021 Week 4	Term 1 2022 Week 7	Term 2 2022 Week 8	Term 3 2022 Weeks 3/4	
	Depth Study Equilibrium / Acid Reactions	Titration Practical Acid/Base Reactions	Skills Organic Chemistry	Trial HSC Examination	
Outcomes	CH11/12-1 CH11/12-5 CH12-12	CH11/12-2 CH11/12-3 CH12-13	CH11/12-6 CH11/12-7 CH12-14	CH11/12-2 CH11/12-3 CH11/12-4 CH11/12-7 CH12-12 CH12-13 CH12-14 CH12-15	
• Knowledge and understanding	10	10	10	10	40
• Skills in Working Scientifically	20	15	10	15	60
Total %	30	25	20	25	100



Education

ULTIMO 90072

CONSTRUCTION CATEGORY B BOARD DEVELOPED COURSE ASSESSMENT SCHEDULE

Preliminary Year 2021 - HSC 2022

QUALIFICATION: CPC20211 Certificate II in Construction Pathways

Training Package: CPC08 Construction, Plumbing and Services (version 9.7)

NESA course code
 2 U X 2 YR - 26201
2021 HSC Exam: 26299
LMBR UI Code:
 CPC20211426201B

TERM	Unit Code	Units Of Competency	AQF CORE / ELECTIVE	HSC STATUSES	HSC INDICATIVE Hrs.	Assessment Task Cluster & Method of Assessment	HSC requirements Exam estimate mark & weighting to total 100%
7 PRELIMINARY UOCs							240 Indicative Hours over 2 years
Term 1	CPCCWHS1001	Prepare to work safely in the construction industry	C	M	10	Cluster A – SafeWork NSW WHS Induction Written Test	
Term 1/2	CPCCCM1013A	Plan and organise work	C	M	10	Cluster B - Small project, Oil Stone Case or Concrete Float Practical , Teacher observations and written test.	50% Preliminary Exam
	CPCCOHS2001A	Apply OHS requirements, policies and procedures in the construction industry	C	M	15		
Term 2/3	CPCCCA2002B	Use carpentry tools and equipment	E	M	20	Cluster C - Tool box, Saw Horse or BBQ table Practical, Teacher observations and written test.	35 hrs. Work placement
	CPCCCA2011A	Handle carpentry materials	E	E	20		
Term 2/3 Work placement	CPCCCM1014A	Conduct workplace communication	C	E	10	Cluster D – Skills in Action Observations, portfolio and written test	
	CPCCCM1012A	Work effectively and sustainably in the construction industry	C	M	25		
7 HSC UOCs							35 hrs. Work placement
Terms 4/5	CPCCCA2003A	Erect and dismantle formwork for footings and slabs on ground	E	E	25	Cluster E - School Project – Concreting Practical, Teacher observations and written test.	
	CPCCCM2006B	Apply basic levelling procedures	E	E	15		
	CPCCCM1015A	Carry out measurements and calculations	C	M	20		
	CPCCCO2013A	Carry out concreting to simple forms	E	E	20		
	CPCCCM2001A	Read and interpret plans and specifications	C	M	20		
Terms 6/7	CPCCWF2001A	Handle wall and floor tiling materials	E	E	25	Cluster F – Wall and Floor Tiling Practical, Teacher observations and written test	
	CPCCWF2002A	Use wall and floor tiling tools and equipment	E	E	10		
NESA requires students to study a minimum of 240 hours to meet Preliminary and HSC requirements.				Total hours	235-245	Units of competency from the HSC focus areas will be included in the optional HSC examination.	

Drama					Year 12 2022
Component	Task 1	Task 2	Task 3	Task 4	Weighting
	Term 4 2021 Week 9	Term 1 2022 Week 9	Term 2 2022 Week 6	Term 3 2022 Weeks 3/4	
	Australian Drama and Theatre. Performance and Essay	Studies in Drama and Theatre (Verbatim Theatre) Group Performance and essay	Individual Project. Presentation of work in progress. Logbook and rationale	Trial HSC Exam Written examination Presentation of group performances & individual projects/ logbooks/rationale	
Outcomes:	H1.1 - H1.3 H2.1 - H2.2	H1.1 - H1.3 H3.1 - H3.3	H1.3, H1.5, H1.7	H1.1 - H1.7 H2.1 - H2.3 H3.1 - H3.3	
• Making	10	10	10	10	40
• Performing	10	10		10	30
• Critically Studying	5	5	10	10	30
Total %	25	25	20	30	100

Economics					Year 12 2022
Component	Task 1	Task 2	Task 3	Task 4	Weighting
	Term 4 2021 Week 8	Term 1 2022 Week 9	Term 2 2022 Week 9	Term 3 2022 Weeks 3/4	
	The Global Economy	ICT Task Australia's Place in the Global Economy	Economic Issues	Trial HSC Examination	
Outcomes	H1, H2, H3, H4, H5	H6, H7, H8, H9, H10	H7, H9, H10, H11, H12	H1, H2, H5, H6, H7	
• Knowledge and understanding of course content	5	10	10	15	40
• Stimulus-based skills	10		5	5	20
• Inquiry and Research	5	5	10		20
• Communication of economic information, ideas and issues in appropriate forms		5	5	10	20
Total %	20	20	30	30	100

Engineering Studies					Year 12 2022
Component	Task 1	Task 2	Task 3	Task 4	Weighting
	Term 4 2021 Week 8	Term 1 2022 Week 8	Term 2 2022 Week 9	Term 3 2022 Weeks 3/4	
	Engineering Report & Test – Civil Structures	Research task / Engineering Report – Personal and Public Transport	Engineering Report Aeronautical Engineering	Trial HSC Examination	
Outcomes	H1.2, H2.1, H3.1, H3.2, H4.3, H5.1, H6.2	H1.1, H1.2, H4.1, H4.2, H4.3.	H2.2, H3.2, H3.3, H4.2, H6.1	H3.1, H3.2, H3.3, H4.2, H4.3, H5.2	
<ul style="list-style-type: none"> Knowledge and understanding of engineering principles and developments in technology 	10	10	10	10	40
<ul style="list-style-type: none"> Skills in research, problem solving and communication related to engineering 	10	10	10	10	40
<ul style="list-style-type: none"> Understanding the scope and role of engineering including management and problem solving 	5	5	5	5	20
Total %	25	25	25	25	100

English Advanced					Year 12 2022
Component	Task 1	Task 2	Task 3	Task 4	Weighting
	Term 4 2021 Week 8	Term 1 2022 Week 6	Term 2 2022 Week 9	Term 3 2022 Weeks 3/4	
	Multimodal text using prescribed text and related material Texts and Human Experiences	Comparative essay Textual Conversations	Imaginative task Craft of Writing	Trial HSC Examination Common Module Module A Module B	
Outcomes	EA12-1, EA12-2, EA12-3, EA12-5, EA12-6, EA12-7	EA12-1, EA12-3, EA12-5, EA12-6, EA12-8	EA12-2, EA12-3, EA12-4, EA12-5, EA12-7, EA12-9	EA12-3, EA12-4, EA12-5, EA12-6, EA12-8	
<ul style="list-style-type: none"> Knowledge and understanding of course content 	10	15	10	15	50
<ul style="list-style-type: none"> Skills in responding to texts and communication of ideas appropriate to audience, purpose and context across all modes 	10	10	15	15	50
Total %	20	25	25	30	100

	English Extension 1			Year 12 2022
Component	Task 1	Task 2	Task 3	Weighting
	Term 4 2021 Week 10	Term 2 2022 Week 2	Term 3 2022 Week 3/4	
	Imaginative response and reflection	Critical response with related text	Trial HSC Examination	
Outcomes	EE12-2, EE12-4, EE12-5	EE12-1, EE12-2, EE12-3, EE12-4	EE12-2, EE12-3, EE12-4, EE12-5	
<ul style="list-style-type: none"> Knowledge and Understanding of texts and why they are valued 	15	20	15	50
<ul style="list-style-type: none"> Skills in complex analysis composition and investigation 	15	20	15	50
Total %	30	40	30	100

English Extension 2				Year 12 2022
Component	Task 1	Task 2	Task 3	Weighting
	Term 1 2022 Week 1	Term 2 2022 Week 2	Term 2 2022 Week 8	
	Viva Voce and written proposal	Literature review	Critique of the creative process	
Outcomes	EEX12-1, EEX12-4, EEX12-5	EEX12-1, EEX12-2, EEX12-3, EEX12-4	EEX12-2, EEX12-3, EEX12-5	
<ul style="list-style-type: none"> • Knowledge and Understanding of texts and why they are valued 	15	20	15	50
<ul style="list-style-type: none"> • Skills in complex analysis composition and investigation 	15	20	15	50
Total %	30	40	30	50

English Standard

Year 12 2022

Component	Task 1	Task 2	Task 3	Task 4	Weighting
	Term 4 2021 Week 8	Term 1 2022 Week 6	Term 2 2022 Week 5	Term 3 2022 Weeks 3/4	
	Texts and Human Experiences Multimodal presentation with related material	Language, Culture and Identity Analytical response	Craft of Writing Imaginative text	Trial HSC Examination Common Module Modules A & B	
Outcomes	EN12-1, EN12-2, EN12-3, EN12-4, EN12-6, EN12-7	EN12-1, EN12-3, EN12-5, EN12-7, EN12-8	EN12-1, EN12-2, EN12-3, EN12-4, EN12-5, EN12-9	EN12-1, EN12-3, EN12-4, EN12-5, EN12-6, EN12-7	
<ul style="list-style-type: none"> Knowledge and understanding of course content 	10	15	10	15	50
<ul style="list-style-type: none"> Skills in responding to texts and communication of ideas appropriate to audience, purpose and context across all modes 	15	5	15	15	50
Total %	25	20	25	30	100

Food Technology					Year 12 2022
Component	Task 1	Task 2	Task 3	Task 4	Weighting
	Term 4 2021 Week 8	Term 1 2022 Week 6	Term 2 2022 Week 8	Term 3 2022 Weeks 3/4	
	Australian Food Industry: Report	Food Manufacture: Case Study and Practical Task	Food Product Development: Design Portfolio and Practical Task	Trial HSC Written Examination	
Outcomes	H1.2, H1.4, H3.1	H1.1, H4.2	H1.3, H4.1, H5.1	H1.1, H1.2, H1.3, H1.4, H2.1, H3.1, H3.2, H4.1, H4.2 H5.1	
<ul style="list-style-type: none"> Knowledge and understanding of course content 	5		5	30	40
<ul style="list-style-type: none"> Knowledge and skills in designing, researching, analysing and evaluating 	10	10	10		30
<ul style="list-style-type: none"> Skills in experimenting with and preparing food by applying theoretical concepts 		15	15		30
Total %	15	25	30	30	100

Geography

Year 12 2022

	Task 1 Ecosystems at Risk	Task 2 Urban Places	Task 3 People and Economic Activity	Task 4 All HSC Topics	Total
Component	Extended Response – In-class Assessment	Extended Response: Report Style (fieldwork)	Geographical Skills and Short and Responses – In Class Assessment	Trial HSC Examination	
Date	2021, T3 – Week 8	2022 , Term 1, Week 10	2022, Term 2, Week 9	2022, Term 3, TBC	
Outcomes	H1, H3, H5, H6, H8, H9, H10, H12, H13	H1, H2, H5, H6, H12, H13	H9, H10, H11	H1, H2, H3, H4, H5, H6, H8, H9, HH10, H11, H12, H13	
Knowledge and understanding of course content	10	10	5	15	40
Geographical Tools and Skills		5	10	5	20
Geographical inquiry and research including fieldwork	10	5	5		20
Communication of geographical information, ideas and issues in appropriate forms.	5	5		10	20
Weighting	25	25	20	30	100

Industrial Technology Multimedia					Year 12 2022
Component	Task 1	Task 2	Task 3	Task 4	Weighting
	Term 4 2021 Week 7	Term 2 2022 Week 3	Term 2 2022 Week 9	Term 3 2022 Weeks 3/4 TBC	
	Designing and Planning Presentation	Evidence video	Project Development and Management Report	Trial HSC Examination	
Outcomes	H3.1, H3.2, H3.3, H5.1	H3.2, H4.3, H5.2	H2.1, H3.3, H4.1, H5.1, H5.2, H6.2	H1.1, H1.2, H1.3, H3.1, H4.3, H6.1, H7.1, H7.2	
<ul style="list-style-type: none"> Knowledge and understanding of course content 	5	5	10	20	40
<ul style="list-style-type: none"> Knowledge and skills in the design, management, communication and production of a major project 	15	15	20	10	60
Total %	20	20	30	30	100

Legal Studies

Year 12 2022

Component	Task 1	Task 2	Task 3	Task 4	Weighting
	Term 4 2021 Week 7	Term 1 2022 Week 6	Term 2 2022 Week 9	Term 3 2022 Weeks 3/4 TBC	
	Crime: Case Study	Human Rights: Presentation of a contemporary issue	Focus Studies: Research & in-class task	Trial Examination	
Outcomes	H1,H4, H5, H6, H7, H8, H9	H2, H3, H4, H5, H6, H9	H1, H4, H5, H8, H9, H10	all	
• Knowledge and understanding of course content	10	10	10	10	40
• Analysis & Evaluation	5	5	5	5	20
• Research	10	5	5		20
• Communication	5	5	5	5	20
Total %	25	25	25	25	100

Mathematics Advanced

Year 12 2022

Component	Task 1	Task 2	Task 3	Task 4	Weighting
	Term 4 2021 Week 6	Term 1 2022 Week 9	Term 2 2022 Week 5	Term 3 2022 Weeks 3/4	
	Assignment / Investigation Topics: F2, T3	Class test Topics: C2, C3,C4	Class test Topics: S2, S3.1	Trial HSC Examination Topics: F2, T3, C2, C3, C4, M1, S2, S3	
Outcomes	MA12-1 MA12-5 MA12-9 MA12-10	MA12-3 MA12-6 MA12-7 MA12-9 MA12-10	MA12-3 MA12-7 MA12-8 MA12-9 MA12-10	MA12-1, MA12-2 MA12-3, MA12-4 MA12-5, MA12-6 MA12-7, MA12-8 MA12-9, MA12-10	
• Understanding, Fluency and Communicating	10	10	15	15	50
• Problem Solving, Reasoning and Justification	15	15	5	15	50
Total %	25	25	20	30	100

Mathematics Extension 1

Year 12 2022

Component	Task 1	Task 2	Task 3	Task 4	Weighting
	Term 4 2021 Week 8	Term 1 2022 Week 10	Term 2 2022 Week 9	Term 3 2022 Weeks 3/4	
	Class test Topics: V1.1, V1.2	Extended modelling and problem solving task Topic: C2 C3	Assignment / Investigation Topic: S1	Trial HSC Examination Topics: P1, V1, T3, C2, C3, S1	
Outcomes	ME12-2 ME12-6 ME12-7	ME12-1 ME12-4 ME12-6 ME12-7	ME12-5 ME12-6 ME12-7	ME12-1, ME12-2 ME12-3, ME12-4 ME12-5, ME12-6 ME12-7	
• Understanding, Fluency and Communicating	10	13	12	15	50
• Problem Solving, Reasoning and Justification	10	12	13	15	50
Total %	20	25	25	30	100

NOTE: Mathematics Extension 1 students are also required to sit for the Mathematics Advanced assessments.

Mathematics Extension 2

Year 12 2022

Component	Task 1	Task 2	Task 3	Task 4	Weighting
	Term 4 2021 Week 10	Term 1 2022 Week 9	Term 2 2022 Week 10	Term 3 2022 Weeks 3/4	
	Class test Topics: N1, P1	Class test Topic: P2, N2	Assignment / Investigation Topics: V1	Trial HSC Examination Topics: P1, P2, V1, N1, N2, C1, M1	
Outcomes	MEX12-1 MEX12-2 MEX12-4 MEX12-7 MEX12-8	MEX12-1 MEX12-2 MEX12-4 MEX12-7 MEX12-8	MEX12-3 MEX12-7 MEX12-8	MEX12-1, MEX12-2 MEX12-3, MEX12-4 MEX12-5, MEX12-6 MEX12-7, MEX12-8	
• Understanding, Fluency and Communicating	10	15	10	15	50
• Problem Solving, Reasoning and Justification	10	10	15	15	50
Total %	20	25	25	30	100

Mathematics Standard 1

Year 12 2022

Component	Task 1	Task 2	Task 3	Task 4	Weighting
	Term 4 2021 Week 7	Term 1 2022 Week 8	Term 2 2022 Week 7	Term 3 2022 Weeks 3/4	
	Assignment / Investigation Topic: N1	In-class project or stimulus activity Topics: F2, F3, S3.1	In-class open- book test Topics: A3.1, M3, S3.2	Trial HSC Examination Topics: A3.1, M3, M4, M5, F2, F3, S3, N1	
Outcomes	MS1-12-8 MS1-12-10	MS1-12-2 MS1-12-5 MS1-12-7 MS1-12-9 MS1-12-10	MS1-12-1 MS1-12-2 MS1-12-3 MS1-12-4 MS1-12-6 MS1-12-7 MS1-12-9 MS1-12-10	MS1-12-1 to MS1-12-10	
<ul style="list-style-type: none"> Understanding, Fluency and Communicating 	10	15	10	15	50
<ul style="list-style-type: none"> Problem Solving, Reasoning and Justification 	10	15	10	15	50
Total %	20	30	20	30	100

Mathematics Standard 2

Year 12 2022

Component	Task 1	Task 2	Task 3	Task 4	Weighting
	Term 4 2021 Week 7	Term 1 2022 Week 6	Term 2 2022 Week 6	Term 3 2022 Weeks 3/4	
	Assignment / Investigation Topics: N2.1, N2.2	In-class test Topics: F4, M7, A4.1	In-class open book test Topics: N3, S4, F5	Trial HSC Examination Topics: A4, M6, M7, F4, F5, S4, S5, N2	
Outcomes	MS2 – 12-8 MS2 – 12-9 MS2 - 12-10	MS2 – 12-1 MS2 – 12-3 MS2 – 12-4 MS2 - 12-5 MS2 – 12-6 MS2 – 12-9 MS2 – 12-10	MS2 – 12-2 MS2 – 12-5 MS2 – 12-7 MS2 – 12-8 MS2 – 12-9 MS2 – 12-10	MS2 – 12-1 MS2 – 12-2 MS2 – 12-3 MS2 – 12-4 MS2 – 12-5 MS2 – 12-6 MS2 – 12-7 MS2 – 12-8 MS2 – 12-9 MS2 – 12-10	
• Understanding, Fluency and Communicating	10	15	10	15	50
• Problem Solving, Reasoning and Justification	15	10	10	15	50
Total %	25	25	20	30	100

Modern History					Year 12 2022
Component	Task 1	Task 2	Task 3	Task 4	Weighting
	Term 4 2020 Week 7	Term 1 2021 Weeks 7/8	Term 2 2021 Week 4	Term 3 2021 Weeks 3/4	
	National Study	Power and Authority in the Modern World 1919-1946	Peace and Conflict Historical Analysis	Trial HSC Examination	
Outcomes	MH12-1, MH12-2 MH12-3, MH12-4 MH12-5, MH12-9	MH12-2, MH12-3 MH12-4, MH12-6 MH12-9	MH12-2, MH12-3 MH12-4, MH12-5 MH12-8, MH12-9	MH12-1, MH12-2 MH12-3, MH12-4 MH12-5, MH12-6 MH12-7, MH12-9	
• Knowledge and understanding of course content	5	10	10	15	40
• Historical skills in the analysis and evaluation of sources and interpretations		10		10	20
• Historical inquiry and research	10		10		20
• Communication of historical understanding in appropriate forms	5	5	5	5	20
Total %	20	25	25	30	100

Music

YEAR 12 2022

Component	Task 1	Task 2	Task 3	Task 4	Weighting
	Term 4 2021 Week 8	Term 1 2022 Week 6	Term 2 2022 Week 8	Term 3 2022 Week 3/4	
	<p align="center">Composition portfolio and Aural Analysis</p> <p align="center">Topic 1</p> <p>Submission of a composition or arrangement, aural analysis of composition with reference to the concepts of music relevant to the chosen topic</p>	<p align="center">Presentation of Performance and Viva Voce</p> <p align="center">Topic 2</p> <p>Solo or ensemble performance and in-class viva voce based on performance repertoire demonstrating an understanding of composition and performance techniques and features of the topic</p>	<p align="center">Presentation or Submission: Elective Option for Topics 1 and 2 (Student's Choice)</p> <p>Presentation of performance and/or composition portfolio and/or musicology outline and viva voce</p>	<p align="center">Trial HSC Examination</p> <p>Aural Skills Examination Presentation of elective performance or elective composition portfolio or elective musicology outline and viva voce based on Topic 3</p>	
Outcomes	H2, H4, H5, H6, H7, H8	H1, H2, H4, H5, H6	H1-8	H1-8	
● Performance		10			10
● Composition	10				10
● Musicology		10			10
● Aural	10			15	25
● Electives			Elective 1 = 15 Elective 2 = 15	Elective 3 =15	45
Total %	20	20	30	30	100

Physics					Year 12 2022
Component	Task 1	Task 2	Task 3	Task 4	Weighting
	Term 4 2021 Week 8	Term 1 2022 Week 4	Term 2 2022 Week 3	Term 3 2022 Week 3/4	
	Practical Task Electromagnetism	Processing/ Modelling Task Advanced Mechanics	Depth Study Literature Review and Investigation Nature of Light	Trial HSC Examination	
Outcomes	PH11/12-3 PH11/12-5 PH11/12-6 PH11/12-7 PH12-13	PH11/12-4 PH12-12	PH11/12-3 PH11/12-4 PH11/12-7 PH12-14	PH11/12-4 PH11/12-5 PH11/12-6 PH12-12 PH12-13 PH12-14 PH12-15	
● Knowledge and Understanding	5	5	10	20	40
● Skills in Working Scientifically	20	15	15	10	60
Total %	25	20	25	30	100

Software Design and Development

Year 12 2022

Component	Task 1	Task 2	Task 3	Task 4	Weighting
	Term 4 2021 Week 8	Term 1 2022 Week 8	Term 2 2022 Week 10	Term 3 2022 Weeks 3/4	
	Software Solution Case Study	Topic Test	Project	Trial HSC Examination	
Outcomes	H2.1, H2.2, H3.1, H4.1	H1.1, H1.2, H1.3, H2.1, H2.2, H3.1, H4.2	H3.2, H4.2, H4.3, H5.1, H5.2, H5.3, H6.1, H6.2, H6.3, H6.4	H1 - H6	
<ul style="list-style-type: none"> ● Knowledge and understanding of course content 	10	10	10	20	50
<ul style="list-style-type: none"> ● Knowledge and skills in the design and development of software solutions 	10	10	20	10	50
Total %	20	20	30	30	100

Studies of Religion II					Year 12 2022
Component	Task 1	Task 2	Task3	Task 4	Weighting
	Term 1 Week 5	Term 1 Week 9	Term 2 Week 10	Term 3 Week 3,4	
Outcomes	H1, H2, H7, H9	H1, H2, H3, H4, H5, H7, H8, H9	H2, H5, H6, H8	H1, H2, H3, H4, H5, H6, H8, H9	
	Religious Tradition Depth Study I	Religious Tradition Depth Study II	Depth Study III and Religion and Peace	Trial HSC Examination	
• Knowledge and understanding of course content	5	10	10	15	40
• Source-based skills	10	5		5	20
• Investigation and research	5	5	10		20
• Communication of information, ideas and issues in appropriate forms		5	5	10	20
Total %	20	25	25	30	100

Visual Arts				Year 12 2022	
Component	Task 1	Task 2	Task 3	Task 4	Weighting
	Term 1 2022 Week 1	Term 2 2022 Week 4	Term 3 2022 Week 2	Term 3 2022 Week 3/4	
	VAPD Progress and Case Study: Artist Practice Critical and Historical interpretation of a selected artist's practice and exploring the Body of Work	Development of the Body of Work and Case Study Submission of artworks under development and VAPD with annotated evaluation of a sustained exploration of materials and ideas. Critical and Historical investigations of Art	Resolving the Body of Work Submission of Body of Work, VAPD, written analysis of intention and art making practice through the conceptual framework	Trial HSC Art Criticism and Art History Written Examination	
Outcomes	H7 – H10	H1 – H4	H1 – H6	H7 – H10	
• Art making	10	10	30		50
• Art Criticism and Art History	10	10		30	50
Total %	20	20	30	30	100



Ashfield Boys High School
STAGE 6 ASSESSMENT TASK ILLNESS / MISADVENTURE FORM
Submit this proforma to the HEAD TEACHER on the DAY YOU RETURN TO SCHOOL

APPENDIX A

Name of Candidate: William Li

Today's Date: 19/03/2021

Subject: English

Course: Standard

TASK: Task 2: Case Study of a text

WEIGHTING 10% DUE DATE: 18/03/2021

Reasons for missing the task: Illness – broke wrist and had to go to hospital for treatment

(Give details which support your case to present the task at a later date or sit for a substitute task)

Medical Certificate **MUST** be attached to the back of this form if your reason is **ILLNESS** Medical Certificate is attached: YES / NO

A STATEMENT from a parent/Guardian or witness may be attached if you feel it will support your application

If you were sick DURING an exam, was the teacher aware before the exam began? YES / NO

Candidate Signature: _____ Parent/Guardian Signature _____

Classroom Teacher /Exam Supervisor comment: _____

Work Submitted 18/03/2016

Signature: _____ Date: 18/03/2016

A new form is required for

Head Teacher comment and decision: (indicate if this application needs to go to the School Appeals Committee: YES / NO

Student to hand in assessment task – handed in 18/03/2021

Signature: _____ Date: _____

APPEALS COMMITTEE: DECISION _____

Deputy Principal in Charge of Year 11/12:

Principal:



Ashfield Boys High School

STAGE 6 ASSESSMENT TASK ILLNESS / MISADVENTURE FORM

Submit this proforma to the **HEAD TEACHER** on the **DAY YOU RETURN TO SCHOOL**

Name of Candidate: _____

Today's Date: _____

Subject: _____

Course: _____

TASK: _____

WEIGHTING _____ DUE DATE: _____

Reasons for missing the task: _____

(Give details which support your case to present the task at a later date or sit for a substitute task)

A new form is required for

Medical Certificate **MUST** be attached to the back of this form if your reason is **ILLNESS** **Medical Certificate is attached: YES / NO**

A STATEMENT from a parent/Guardian or witness may be attached if you feel it will support your application

If you were sick DURING an exam, was the teacher aware before the exam began? YES / NO

Candidate Signature: _____ Parent/Guardian Signature _____

Classroom Teacher /Exam Supervisor comment: _____

SAMPLE

Signature: _____ Date: _____

Head Teacher comment and decision: (indicate if this application needs to go to the School Appeals Committee: YES / NO)

Signature: _____ Date: _____

APPEALS COMMITTEE: DECISION _____

Deputy Principal in Charge of Year 11/12: _____

Principal: _____



Ashfield Boys High School OVERSEAS OR INTERSTATE TRIPS

APPENDIX B

In addition to this form,
students are to complete an
application for exemption
from school form
(see administration office)

NAME:

YEAR:

DESTINATION:

APPROVED: YES / NO

DATE OF DEPARTURE:

DATE OF RETURN:

SAMPLE

Subject	Course	Work/Assessment Tasks that will be missed

HEAD TEACHER'S COMMENT: The consequences of missing the above work will be: _____

Signature of Parent/Guardian: _____

Date: _____

Year Adviser's Signature: _____

Date: _____

Deputy/Principal's Signature: _____

Date: _____



**ASHFIELD BOYS HIGH SCHOOL
HSC ASSESSMENT APPEALS COMMITTEE**

APPENDIX C

Date:

Name of Student:

Course:

Task:

Weighting:

Reason for Appeal:

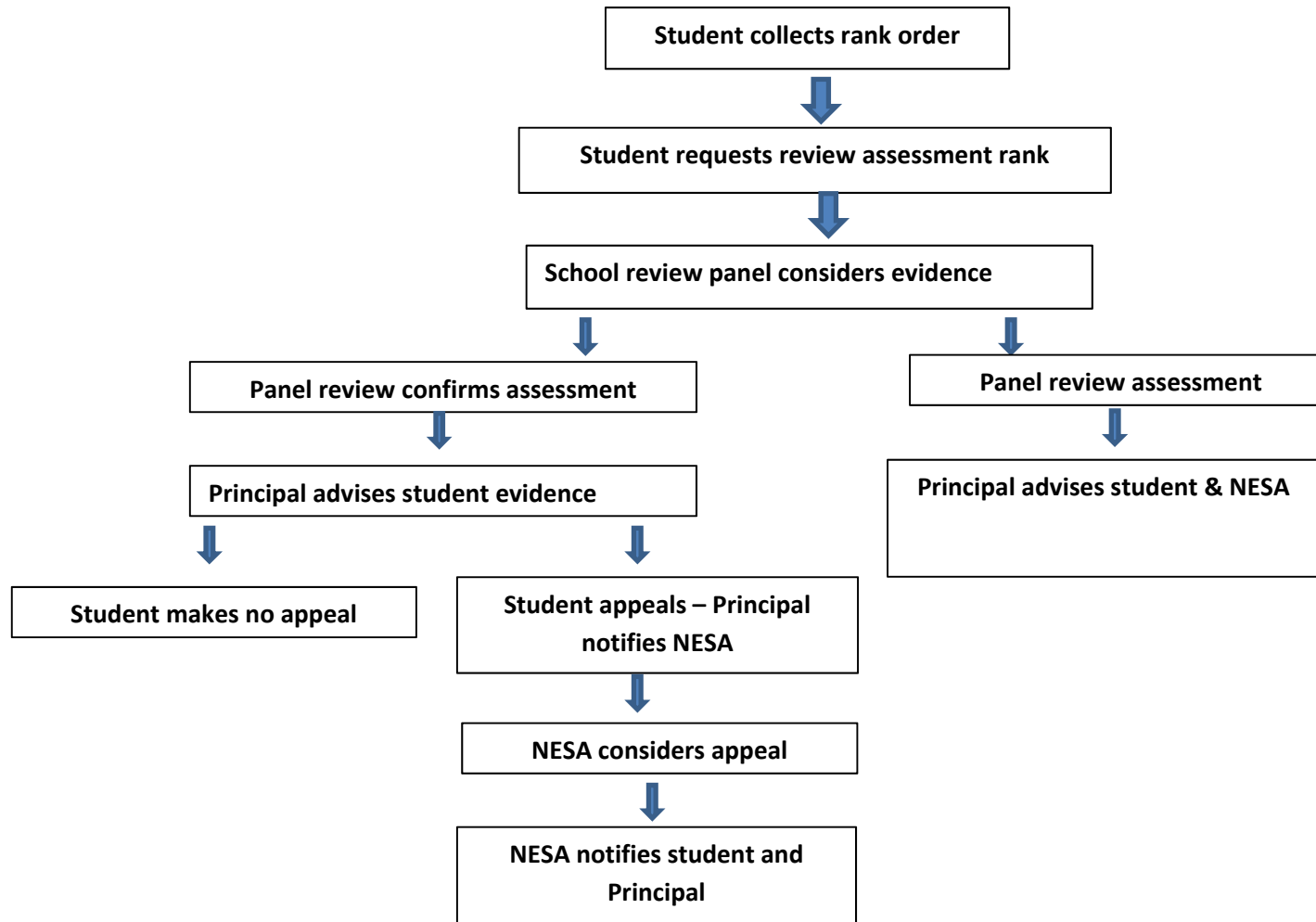
S A M P L E

Decision by Appeals Committee

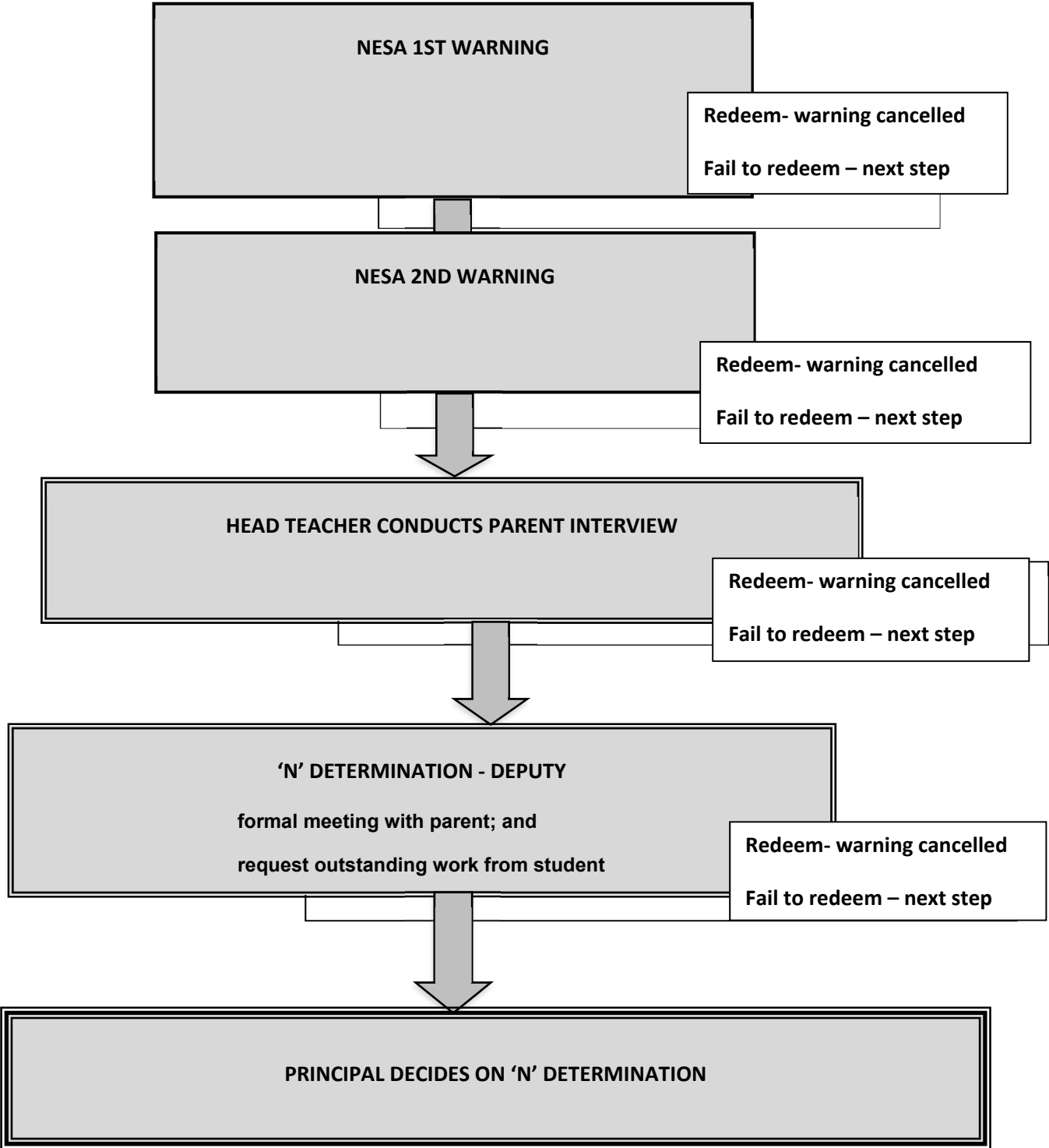
Signatures: HSC Appeals Committee

..... Date:.....

APPEALS FLOWCHART



YEAR 10/11/12 NESAs 'N' DETERMINATION



YEAR 12 ASSESSMENT SCHEDULE SUMMARY 2021 - 2022

Week	TERM 4 2021	TERM 1 2022	TERM 2 2022	TERM 3 2022
1		<ul style="list-style-type: none"> • English Extension 2 • Visual Arts 		
2		<ul style="list-style-type: none"> • English Extension 1 	<ul style="list-style-type: none"> • English Extension 2 	<ul style="list-style-type: none"> • Visual Arts
3			<ul style="list-style-type: none"> • Physics • Industrial Technology • Multimedia 	<ul style="list-style-type: none"> • Trial HSC
4	<ul style="list-style-type: none"> • Chemistry 	<ul style="list-style-type: none"> • Physics • Ancient History 	<ul style="list-style-type: none"> • Modern History • Visual Arts 	<ul style="list-style-type: none"> • Trial HSC
5	<ul style="list-style-type: none"> • Studies of Religion II 		<ul style="list-style-type: none"> • English Standard • Mathematics Advanced 	
6	<ul style="list-style-type: none"> • Mathematics Advanced 	<ul style="list-style-type: none"> • Mathematics Standard 2 • English Advanced • English Standard • Food Technology • Legal Studies • Music 	<ul style="list-style-type: none"> • Business Studies • Mathematics Standard 2 • Drama 	

Week	TERM 4 2021	TERM 1 2022	TERM 2 2022	TERM 3 2022
7	<ul style="list-style-type: none"> ● Legal Studies ● Mathematics Standard 1 ● Mathematics Standard 2 ● Modern History ● Industrial Technology ● Multimedia 	<ul style="list-style-type: none"> ● Business Studies ● Chemistry ● Modern History 	<ul style="list-style-type: none"> ● Mathematics Standard 1 	
8	<ul style="list-style-type: none"> ● Ancient History ● Economics ● Engineering Studies ● English Advanced ● English Standard ● Food Technology ● Geography ● Mathematics Extension 1 ● Music ● Physics ● Software Design & Development 	<ul style="list-style-type: none"> ● Biology ● Engineering Studies ● Mathematics Standard 1 ● Modern History ● Software Design & Development 	<ul style="list-style-type: none"> ● Ancient History ● Chemistry ● English Extension 2 ● Food Technology ● Music 	
9	<ul style="list-style-type: none"> ● Business Studies ● Drama ● Mathematics Extension 2 	<ul style="list-style-type: none"> ● Economics ● Geography ● Studies of Religion II ● Mathematics Advanced ● Mathematics Extension 2 ● Drama 	<ul style="list-style-type: none"> ● Biology ● Economics ● Engineering Studies ● English Advanced ● Geography ● Legal Studies ● Mathematics Extension 1 ● Industrial Technology ● Multimedia 	
10	<ul style="list-style-type: none"> ● Biology ● English Extension 1 	<ul style="list-style-type: none"> ● Mathematics Extension 1 	<ul style="list-style-type: none"> ● Mathematics Extension 2 ● Software Design & Development ● Studies of Religion II 	

- Students should check individual Course Assessment Schedules for details and nature of tasks
- This is subject to change – students will be issued with a notification of assessment prior to assessment tasks.
- Ongoing tasks, including major projects are not listed in this schedule (this includes externally assessed tasks)

