

ASHFIELD BOYS HIGH SCHOOL

T 9798 6620 | A Liverpool Road Ashfield NSW 2131 | E ashfieldbo-h.school@det.nsw.edu.au | W ashfield-h.schools.nsw.gov.au



YEAR 12 ASSESSMENT POLICY & COURSE SCHEDULES 2024 Higher School Certificate

Address for Correspondence:

117 Liverpool Road, Ashfield 2131

Ashfield Boys High School

Telephone: (02) 9798 6620

Email: ashfieldbo-h.school@det.nsw.edu.au

Website: www.ashfieldbo-h.school.nsw.edu.au

Table of Contents

Introduction	1
The School’s Responsibilities.....	3
The Student’s Responsibilities	4
Familiarity With Assessment Policy	4
Attendance	4
Punctuality.....	4
Attendance On Day Of Task.....	4
Attendance Day Before The Task.....	4
Hand In Tasks	4
Satisfactory Completion Of Course.....	4
Notification Of Clashes With Other School Business	5
Illness/Misadventure At Time Of Assessment.....	5
Known Illnesses/Misadventure	5
Checking Of Tasks	5
Communication Is The Key.....	5
Assessment Task Procedures.....	6
Notification Of Task	6
Completion Of Assessment	6
Work Placement, Knockout Sport and Other Schools Activities.....	6
Returning Of A Marked Task	6
Appeals	6
Computer and technology issues.....	7
Absence on the Day of Assessment Tasks	8
Illness / Misadventure Flow Chart	9
Year 10/11/12 NESA ‘N’ Determination.....	10
Completion of a Course.....	11
Disability Provisions	12
Serious and Non-Serious Attempts	12
Misconduct or Malpractice.....	13

Vocational Education and Training (VET) Courses	15
Reviews and Appeals.....	16
Information	16
Glossary of Key Words.....	17
Year 12 Assessment Schedule Summary 2023-2024	22
Subject Organisation.....	24
Ancient History	25
Biology	26
Business Studies.....	27
Chemistry	28
Construction	29
Drama	30
Economics.....	31
Engineering Studies	32
English Advanced.....	33
English Extension 1	34
English Extension 2.....	35
English Standard	36
Geography	37
Hospitality – Cookery.....	38
Industrial Technology Multimedia	39
Legal Studies.....	40
Mathematics Advanced	41
Mathematics Extension 1.....	42
Mathematics Extension 2.....	43
Mathematics Standard 2.....	44
Modern History	45
Music 1	46
Personal Development / Health / Physical Education	47
Physics.....	48
Society and Culture	49
Studies of Religion II.....	50
Visual Arts	51

Introduction

Student assessment provides evidence to enable teachers to make informed judgements about individual student achievement.

This booklet will assist you in Stage 6 (Preliminary and HSC courses) to understand the policies and procedures related to the assessment process. The following information meets NESA requirements.

This information guarantees that all members of the school community – staff, students, and parents understand the requirements and **ensures these procedures are fair, consistent and equitable for all.**

You **must complete all assessments** in both the Preliminary and HSC courses in order to meet the requirements of the HSC credential. The assessment process starts at the beginning of the Preliminary year with the HSC year starting in Term 4 of the same year.

Attendance in all timetabled lessons, active participation and consistent performance is key to success for both the Preliminary and HSC courses.

Ashfield Boys High School provides an environment where you have every opportunity to reach their full potential. Part of this is the **Senior Study Centre** that is fully staffed every day including recess and lunch. The Centre provides all seniors a place for you to use your time wisely and provides the opportunity to achieve your potential.

There are many people to support you who may be experiencing any problems that may affect your studies. These include:

- Your Deputy Principal
- Your Head Teachers
- Your teachers
- Your Year Adviser
- The Careers Adviser

The Careers Adviser will assist with planning post school study/employment and if there are any questions regarding your Higher School Certificate and the Australian Tertiary Admission Rank (ATAR)

Not every piece of work completed will be part of the “assessment” mark. Work is set to practise skills so students can see how well they understand the topic. **All set work should be regarded as an essential course requirement**, even when it is not included as an assessment task. You are required to make a serious attempt, be diligent and complete all tasks presented to them.

You put at risk your ability to satisfactorily completed a course if there is sufficient evidence of:

- a. failure to complete experiences specified in the syllabus, eg fieldwork, work experience, oral presentations, assignments, practical work, participation in class;
- b. non-serious or trivial preparation for exams;
- c. Misconduct or malpractice

The School's Responsibilities

The school's responsibilities include:

1. To ensure the assessment policy and procedures are **clear, concise and provides you with equal opportunity to achieve their personal best**. This information is the basis to guarantee that procedures are applied consistently, equally and are fair for all.
2. Provide you with written information about Ashfield Boys High School's assessments including mandatory requirements for assessment in each course.
3. **Monitoring to ensure that your pattern of study meets the NESA requirements** of both the preliminary and HSC courses. This is checked at numerous times throughout Stage 6. You check and sign official confirmation of your pattern of study from NESA. This is kept by the school.
4. Ensuring Stage 6 students complete the **HSC: All My Own Work as mandated by NESA**. This program is designed to outline the principles and practices of good scholarship. This includes applying ethical practices. All work submitted throughout Stage 6 **must** be your own work.
5. The **marking of assessment tasks** is completed in accordance with the prescribed marking criteria. You will receive clear feedback on your performance in every task that you sign for as part of your assessment notification. This feedback should indicate the student's attainment in the task relative to the outcomes and suggested ways in which to improve.

The Student's Responsibilities

Students have a range of responsibilities in relation to successfully completing the Preliminary Course and attainment of the HSC credential. These include:

Familiarity With Assessment Policy

You must be familiar with the assessment procedures set out in this book for each subject you take. **It is up to you to be aware of due dates** for assessment tasks and complete tasks on time.

Attendance

You must be present and attend all timetabled lessons the day before and **the day of the assessment task**. Failure to do so without a valid reason or evidence to support this, will result in a zero. If you are absent from school, you must check with your teachers to see if any assessment tasks have been set on the **first day of your return to school**.

Punctuality

You **must be on time** for assessment tasks as no extra time can be given. If you have had a misadventure or are sick, please call the school immediately on 97986620 to explain your situation to your Deputy Principal or the Head Teacher of the Faculty.

Attendance On Day Of Task

Be present to do all in-school assessment tasks. If you are absent on the day of the task, you must provide a doctor's certificate or other evidence explaining this absence attached to a misadventure form. You must sit for, or submit, over 50% of all assessment tasks on the due day.

Attendance Day Before The Task

Be present to do all in-timetabled lessons **the day before a task**. If you are absent the day before a task **must complete an Illness/Misadventure form** and provide a doctor's certificate explaining this absence. This includes when absent on a Friday when a task is completed on the following Monday.

Hand In Tasks

You must hand in your own work to the **teacher or Head Teacher of the faculty ONLY**. If you are absent on the day a hand-in task is due, **contact your teacher** on 97986620 **and email a copy of your task** to your Deputy Principal and teacher before roll call. You must then see your Deputy Principal about the need for an Illness/Misadventure form before roll call **on the day you return**.

Satisfactory Completion Of Course

You must meet the requirements to **satisfactorily complete all courses**. This includes applying yourself with diligence and sustained effort to the set tasks and experiences provided in the course by the school.

Notification Of Clashes With Other School Business

Notify your teacher and Head Teacher of any assessment problems in advance, e.g. clash of dates with a compulsory VET work placement. You must discuss this situation with the Head Teacher of the faculty. An alternative date or arrangement must be met before you attend other school business.

Illness/Misadventure At Time Of Assessment

If you come to school and become ill on the day of an assessment task, or, have suffered a misadventure **immediately prior to or on the day of an assessment task**, you must inform the Deputy Principal or Head Teacher on the day of the task prior to the completion of the task. Illness/Misadventure forms must then be submitted to the Deputy Principal, supported by a doctor's certificate, on the day you return to school.

Known Illnesses/Misadventure

If you are a student with a known illness/misadventure that is documented with your Deputy Principal, you can negotiate an extension at least **48 hours before the task is due**.

Checking Of Tasks

Check the marking of each task **when it is returned to you**. Any questions e.g. compiling of marks, must be raised in that lesson. Ensure you check all aspects of the marking.

Communication Is The Key

If there are any issues or problems that may prevent you achieving your best in an assessment task or with course work, you must let your teacher or Deputy Principal know as soon as possible. **Every issue can be worked through**. This must be done prior to the due date of the work.

Assessment Task Procedures

Notification Of Task

You will be given at least **two weeks' notice in writing** for any assessment task. You must sign that you have received the task notification and then again when you do or submit the task. This is your insurance policy.

Completion Of Assessment

Assessment tasks must be submitted, or undertaken, **on the due date**. A written copy of oral presentations is to be submitted to your teacher as specified on the assessment notification. A zero mark will be awarded for work submitted late or if a student is absent and no exceptional circumstances exist for the late submission or absence.

Work Placement, Knockout Sport and Other Schools Activities

If you are completing a **compulsory VET work placement**, it is your responsibility to notify your teacher and the Head Teacher of faculty if a clash occurs. A new date or alternative arrangement must be made by the Head Teacher.

If you are involved in knockout sport or other school-based activity, you must notify your teacher and Head Teacher of the faculty **as soon as you are aware of the clash of dates**. Permission to attend the knockout game will be at the discretion of your Deputy Principal. If it is a hand-in task, you must email the task to the teacher and Head Teacher on the required day by roll call.

Returning Of A Marked Task

On the day you receive a marked task back, it is your responsibility **at that time** to:

- Check marks have been correctly added and match the marks on the assessment task.
- To enquire about the marking of a question if you are concerned or confused.

Appeals

Complaints about **assessment procedures** should be made in the first place to your teacher. Further appeals may be made to the Head Teacher of the faculty and this must be in writing and submitted to your Deputy Principal within **five school days** of the returned task.

The way marks were awarded by the teacher for assessment tasks will not be subject to review.

The review panel will be made by your Deputy Principal, the Head Teacher concerned, and one other Head Teacher.

A student who feels that they have not been given procedural fairness can lodge an appeal with the Principal.

Computer and technology issues

Technology and/or computer equipment failure are **not grounds for misadventure**. You must keep evidence of your work - use online programs, save to the cloud, print or email as you work on an assessment task. No evidence will mean no consideration of a mark.

Absence on the Day of Assessment Tasks

1. If you are **ill on the day** of an assessment or have a misadventure occur, contact the school on 9798-6620 **before roll call on that day** and let your Deputy Principal or the Head Teacher of the Faculty know that you will be absent and the reason for this absence.
2. You **must obtain a Doctor's Certificate** or other official documentation to explain the absence. This Doctor's Certificate must be supplied on the day of the task, **not in retrospect**. If you are also absent in the days before or after the task, your Doctor's Certificate must cover these absences as well.

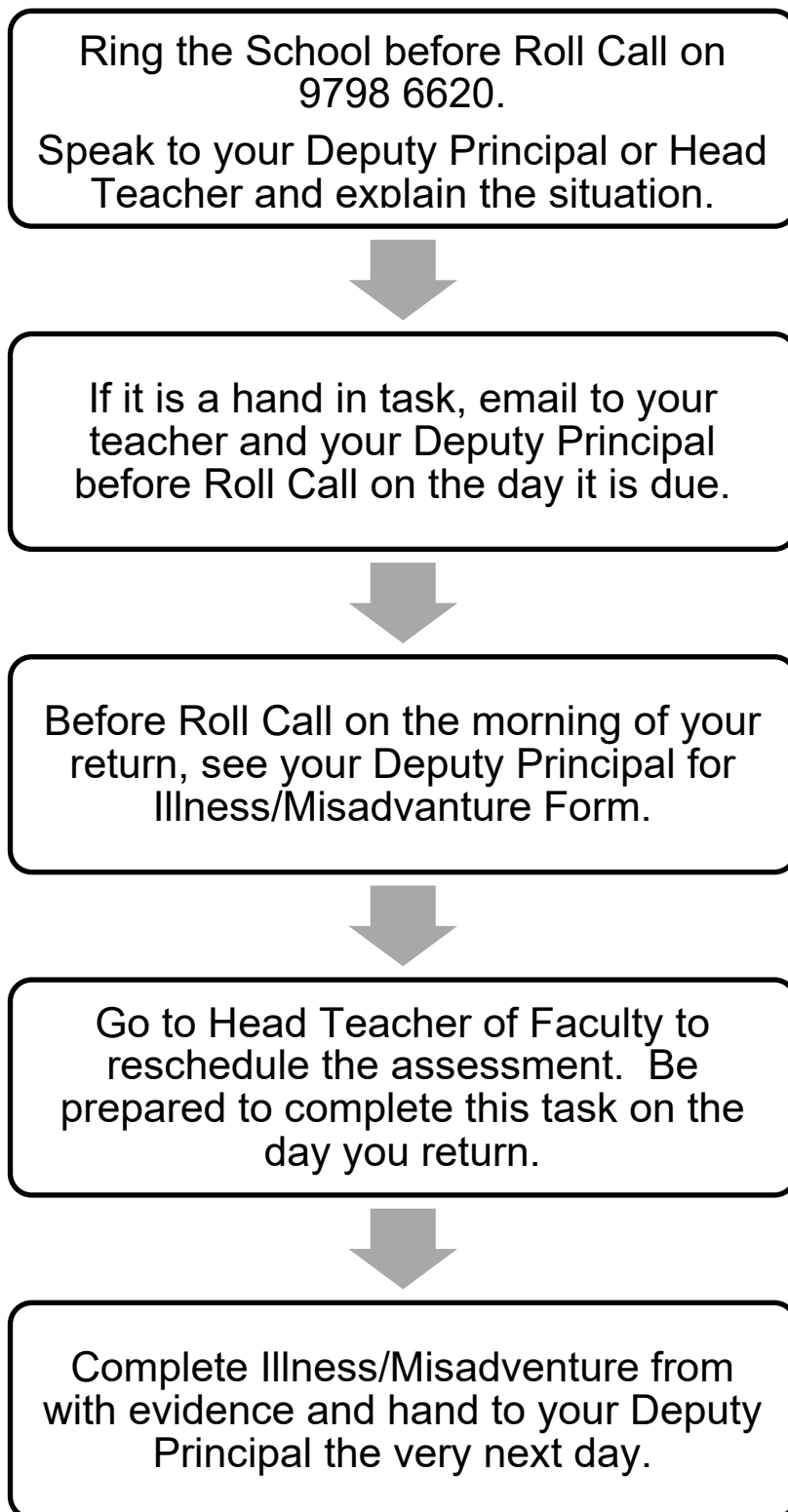
Medical certificates must be issued by a qualified medical practitioner, preferably your family doctor or specialist.

3. On the morning of your return to school, **before roll call**, you must see your Deputy Principal with your Doctor's Certificate and complete an **Illness/Misadventure Application form**.
4. The review of this form will be led by the Deputy Principal, who will decide the outcome of your Illness/Misadventure application.
5. You will be required to **complete the missed task** in consultation with the Head Teacher of the faculty. The date and time of this task will be determined by the Head Teacher. This will be on the day of your return unless an alternative has been discussed and arranged with by the Head Teacher of faculty.

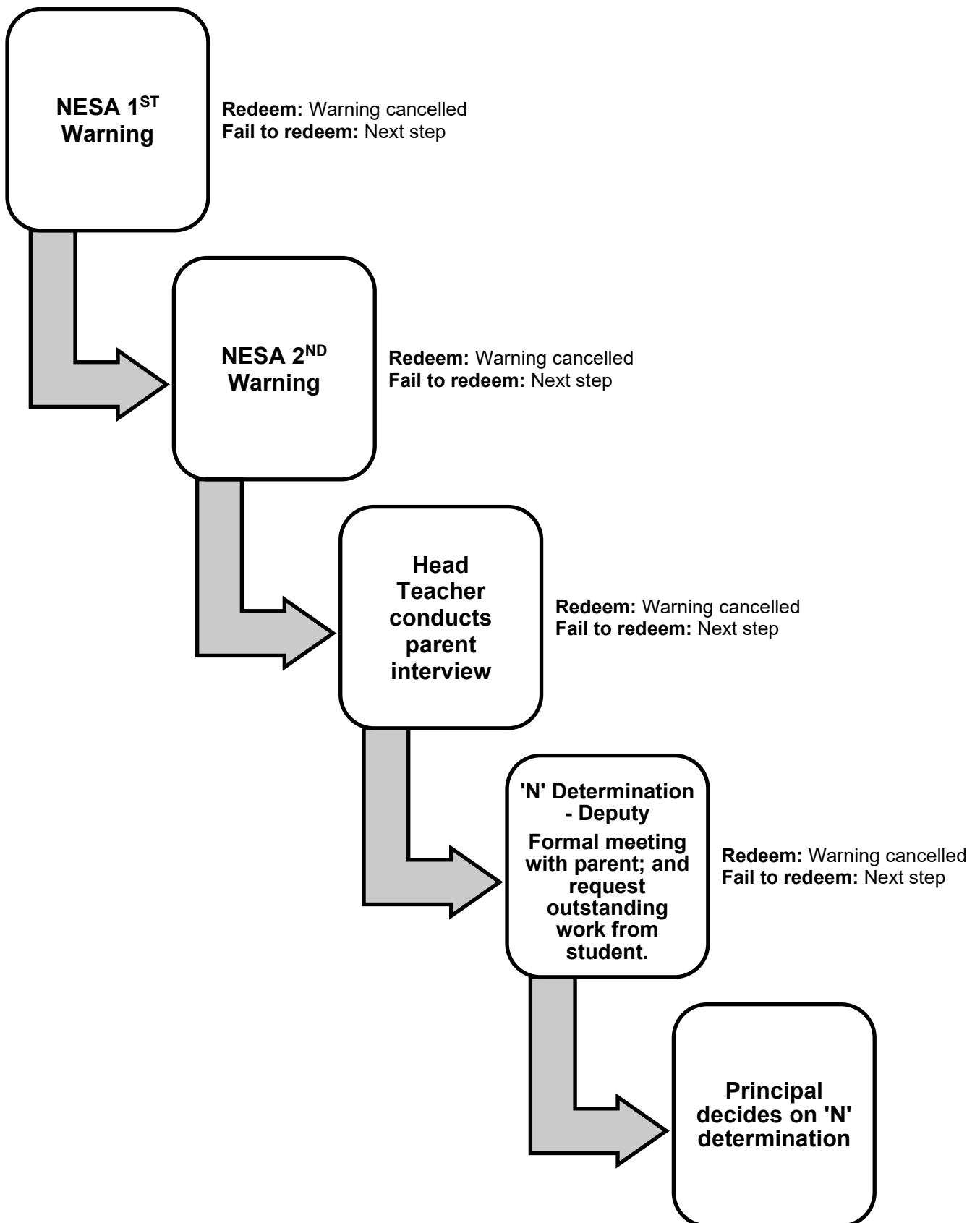
You will be required to complete this task regardless of the success or otherwise of your Illness/Misadventure Application.

6. You may appeal the outcome of your Illness/Misadventure Application, in writing, to the Principal within **2 days of receiving notification**.
7. If you are ill and your task is a hand-in task, **contact your teacher on 97986620 and email them and your Deputy Principal, a copy of your task before roll call**. You must then see your Deputy Principal about the need for an Illness/Misadventure form before roll call on the **day you return**.

Illness / Misadventure Flow Chart



Year 10/11/12 NESA 'N' Determination



Completion of a Course

1. For you to satisfactorily complete a course, NESA requires the principal to have sufficient evidence that you have:
 - a. Achieved some or all the course outcomes,
 - b. Applied yourself with diligence and sustained effort to the set tasks and experiences provided in the course by the school; and
 - c. Followed the course developed or endorsed by NESA; and
2. To have successfully “**achieved some or all of the course outcomes**”, you must:
 - Have demonstrated the capacity to achieve some of the course outcomes through the completion of both formal and informal assessment.
 - Have both excellent overall school attendance and subject attendance.
3. To have successfully “**applied yourself with diligence and sustained effort to the set tasks and experiences provided in the course by the school**”, you must:
 - Complete all assessments.
 - Make a genuine attempt for all tasks.
 - Complete a significant amount of non-assessable work such as class work, homework, practical work and other learning tasks the teacher has assigned.
4. To have successfully “**followed the course developed or endorsed by NESA**”, you must:
 - Have both excellent overall school attendance and subject attendance.
 - Complete a significant amount of non-assessable work such as class work, homework, practical work and other learning tasks the teacher has assigned.
 - Completed both the Preliminary and HSC course for that subject.
 - A failure to meet these requirements will see a **N Warning letter** sent to your parents/guardians.
 - You will be given **every opportunity to correct the problem** indicated on the N-Warning Letter. Failure to correct the issue will see at least one follow-up warning letter issued.
 - If you have not complied with the requirements for satisfactory completion of a course at the time of finalising assessments, you cannot be regarded as having satisfactorily completed the course and a non-completion determination will be issued.
 - If you fail to satisfy minimum course requirements, you will be awarded an ‘N’ determination. This means you have failed the course and it will not count towards the HSC. (You must complete at least 12 Preliminary units +10 HSC units.)

Disability Provisions

You may wish to apply for disability provisions. If you suffer from a disability which would, in a normal test situation, prevent you from:

reading and interpreting the test questions and/or communicating knowledge or understanding to an examiner as effectively as a student without a disability

Please talk to your Deputy Principal about lodging an application with NESA. A new application needs to be lodged with NESA each year for students who have previously been granted disability provisions.

Your application must contain recent evidence of your disability and in some cases examples of your work.

Principals have the authority to decide on and to implement Disability Provisions for school- based assessments only.

Serious and Non-Serious Attempts

You should enter an assessment task or HSC examination knowing you **MUST** make a genuine effort at the task or exam. **NESA Rules and Procedures** describe the requirement that students make a serious attempt to answer the examination questions – **failure to do so is called a non-serious attempt or a non-attempt.**

- Your task or exam is considered a non-attempt if there is no evidence of academic engagement with the task or exam.
- You are required to attempt a range of question types throughout the examination paper and must satisfactorily attempt all sections.
- It is not sufficient to answer multiple choice questions only.
- Merely rewriting the question is not considered to be an adequate attempt at the paper.
- A non-serious attempt includes if you write frivolous or objectionable material in response to the questions.

If you are identified as providing non-serious or non-attempts, you will be asked to justify why you should receive a result in the task or course concerned. The consequences may be significant and may include not receiving an award in that course. This may render you ineligible for the award of the HSC.

Misconduct or Malpractice

Your honesty in completing assessment tasks, examinations and submitted works, and of teachers and others in guiding students, underpins the integrity of the ROSA, Preliminary and Higher School Certificate. Throughout the assessment process, the highest level of honesty is required.

Misconduct during any in class assessment task or formal examination will lead to a zero for that task.

All work presented in assessment tasks and HSC examinations (including submitted works and practical examinations) must be your own or must be acknowledged appropriately.

Malpractice, including plagiarism, could limit your marks for the task or examination, and will jeopardise your HSC results.

Each student's mark will be determined by the quality of the work produced by the student only. To demonstrate honesty, any component of your work that has been written, created or developed by others must be acknowledged in accordance with NESA's subject specific documentation. Use or inclusion of material from other sources such as books, journals and electronic sources, including the Internet, must be acknowledged. General teaching and learning do not require formal acknowledgement.

Malpractice is any activity that allows you to gain an unfair advantage over other students. This includes, but is not limited to:

- copying someone else's work in part or in whole, and presenting it as their own.
- using any form of **Artificial Intelligence** in written, practical or performance tasks
- using material directly from books, journals, CDs or the internet without reference to the source
- building on the ideas of another person without reference to the source
- buying, stealing or borrowing another person's work and presenting it as their own
- submitting work to which another person such as a parent, coach or subject expert has contributed substantially
- using words, ideas, designs or the workmanship of others in practical and performance tasks without appropriate acknowledgement
- paying someone to write or prepare material
- breaching school examination rules
- using non-approved aids during an assessment task
- contriving false explanations to explain work not handed in by the due date.
- assisting another student to engage in malpractice

If you are involved in malpractice in relation to any assessment task will be referred to the Head Teacher and then your Deputy Principal. They will review each allegation of malpractice on its merits, considering all the issues, in order to arrive at a fair conclusion and make recommendations to the Principal.

If you are suspected of malpractice, you will be required to demonstrate that all unacknowledged work is entirely their own. Detected malpractice could jeopardise your HSC.

All students who are found to have engaged in malpractice will receive zero and be recorded in NESA's Register of Malpractice.

Vocational Education and Training (VET) Courses

Vocational Education and Training (VET) courses are offered as part of the Higher School Certificate (HSC) or Record of School Achievement (RoSA). Public Schools NSW, Ultimo is accredited as a Registered Training Organisation (RTO 90072)

VET courses allow you to gain both the HSC or RoSA qualifications and a national qualification or a statement of attainment recognised throughout Australia as part of the Australian Qualification Framework (AQF). These qualifications are widely recognised by industry, employers, tertiary training providers and universities and will assist students to progress to various education and training sectors and employment.

Competency-based training is based on performance standards that have been set by industry. Assessment in all VET courses is competency based. This means that you are assessed on:

- what you can do (the skills) and
- what you know (the knowledge).

These skills and knowledge will equip you in the workplace. When you have been deemed “competent” or “not yet competent” by the teacher, you have successfully achieved competency. You will have the skills and knowledge to complete workplace activities in a range of different situations and environments, to an industry standard of performance expected in the workplace.

A compulsory work placement of 35 hours must be completed in both the Preliminary and HSC course.

If you have already completed part of the course elsewhere, or work experience in a relevant industry, then he may be eligible for **Recognition of Prior Learning (RPL)**. Please discuss this with your VET teacher if this applies to you. You do not have to repeat their training if there is evidence of the student achieving competency.

You have three opportunities to successfully complete a competency or cluster assessment task.

If you wish to appeal a decision you must:

- first obtain a copy of the Student Assessment Appeal form from your teacher for VET courses
- then follow the school review and appeals process.

Reviews and Appeals

Any complaints about assessment **procedure** (that is, assessment procedure does not comply with the guidelines in this booklet), should be made in writing, to the Head Teacher of the relevant faculty. Further appeals may then be made to the school's Review Panel.

The request for review must be made within **five days** of the issue of assessment marks/ ranks. Marks awarded by the marker for assessment tasks will not be subject to review by the Panel.

The school review panel will consist of the Deputy Principal, the Head Teacher concerned, and one other Head Teacher.

A student who is dissatisfied with the school's review procedures may appeal to the Principal. Appeals regarding end of HSC course rank please refer to the [NESA website](#)

Information

Information is located:

- NESA website – www.nesa.nsw.edu.au
- Rules and Procedures for Higher School Certificate Candidates - NESA booklet issued to each student
- School Assessment Policy
- HSC Assessment Policy and Procedures – issued to you at the start of the year, your Year Adviser, Deputy Principal and on school website

The scientific calculators in the link below are approved for use in the 2023 Higher School Certificate examinations. The examinations in which scientific calculators are permitted are listed in the equipment checklist.

http://www.boardofstudies.nsw.edu.au/hsc_exams/calculators.html

A full list of the equipment required for each subject in the HSC Exams can be found at this link: [exam equipment list](#).

Instruction booklets or cards (e.g. reference cards) on the operation of calculators are NOT permitted in the examination room. Candidates are expected to familiarise themselves with the calculator's operation beforehand.

Calculators must have been switched off for entry into the examination room.

Glossary of Key Words

Syllabus outcomes, objectives, performance bands and examination questions have key words that state what students are expected to be able to do. A glossary of key words has been developed to help provide a common language and consistent meaning in the Higher School Certificate documents.

Using the glossary will help teachers and students understand what is expected in responses to examinations and assessment tasks.

The following glossary provides the meaning of these words as they generally apply across subject areas.

Word	Definition	Word	Definition
Account	Account for: state reasons for, report on. Give an account of: narrate a series of events or transactions	Evaluate	Make a judgement based on criteria; determine the value of
Analyse	Identify components and the relationship between them; draw out and relate implications	Examine	Inquire into
Apply	Use, utilise, employ in a particular situation	Explain	Relate cause and effect; make the relationships between things evident; provide why and/or how
Appreciate	Make a judgement about the value of	Extract	Choose relevant and/or appropriate details
Assess	Make a judgement of value, quality, outcomes, results or size	Extrapolate	Infer from what is known
Calculate	Ascertain/determine from given facts, figures or information	Identify	Recognise and name
Clarify	Make clear or plain	Interpret	Draw meaning from
Classify	Arrange or include in classes/categories	Investigate	Plan, inquire into and draw conclusions about
Compare	Show how things are similar or different	Justify	Support an argument or conclusion
Construct	Make; build; put together items or arguments	Outline	Sketch in general terms; indicate the main features of
Contrast	Show how things are different or opposite	Predict	Suggest what may happen based on available information

Word	Definition	Word	Definition
<i>Critically (analyse/evaluate)</i>	Add a degree or level of accuracy depth, knowledge and understanding, logic, questioning, reflection and quality to (analyse/evaluate)	<i>Propose</i>	Put forward (for example a point of view, idea, argument, suggestion) for consideration or action
<i>Deduce</i>	Draw conclusions	<i>Recall</i>	Present remembered ideas, facts or experiences
<i>Define</i>	State meaning and identify essential qualities	<i>Recommend</i>	Provide reasons in favour
<i>Demonstrate</i>	Show by example	<i>Recount</i>	Retell a series of events
<i>Describe</i>	Provide characteristics and features	<i>Summarise</i>	Express, concisely, the relevant details
<i>Discuss</i>	Identify issues and provide points for and/or against	<i>Synthesise</i>	Putting together various elements to make a whole
<i>Distinguish</i>	Recognise or note/indicate as being distinct or different from; to note differences between		

ASHFIELD BOYS HIGH SCHOOL

T 9798 6620 | A Liverpool Road Ashfield NSW 2131 | E ashfieldbo-h.school@det.nsw.edu.au | W ashfieldbo-h.schools.nsw.gov.au



Sample Form: Assessment Task Illness / Misadventure Form

See your *Deputy* to get this form on the *day you return to school*

YOUR NAME: _____ YEAR: _____ DATE: _____

SUBJECT: _____

TEACHER'S NAME: _____

NATURE OF ASSESSMENT: _____

(Examination, Topic or Unit Test, Assignment, Research Activity, Practical Exercise, Practical Test, Field Work, other.)

DATE OF ORIGINAL TASK: ____/____/____

NATURE OF ABSENCE: _____

(State sufficient details to support your case for consideration to sit for task or substitute task or to gain an extension.)

MEDICAL CERTIFICATE FROM: _____ (Name of Doctor)

OR NATURE OF OTHER VERIFICATION (e.g, funeral notice from newspaper etc.)

YOUR SIGNATURE: _____ DATE: ____/____/____

TEACHER'S COMMENT: _____

TEACHER'S SIGNATURE: _____ DATE: ____/____/____

HEAD TEACHER'S SIGNATURE: _____ DATE: ____/____/____

ASSESSMENT COMMITTEE'S RECOMMENDATION (if needed):

YOU MUST RETURN THE COMPLETED FORM TO THE DEPUTY PRINCIPAL

DEPUTY PRINCIPAL'S SIGNATURE: _____ DATE: ____/____/____

DATE TASK WILL BE COMPLETED (This may be as early as the day your return) DATE: ____/____/____

OFFICE USE ONLY:

Copy of Form to HT _____

Copy of Medical Certificate to office for attendance _____

ASHFIELD BOYS HIGH SCHOOL

T 9798 6620 | A Liverpool Road Ashfield NSW 2131 | E ashfieldbo-h.school@det.nsw.edu.au | W ashfieldbo-h.schools.nsw.gov.au

**Sample Letter:****Official Warning of N Determination (HSC)****WARNING LETTER – Non-completion of a Higher School Certificate Course**Dear _____
Name of parent/caregiver*Re: OFFICIAL WARNING - Non-completion of a Higher School Certificate Course*I am writing to advise that your son _____
student name
is in danger of not meeting the Course Completion Criteria for the Higher School Certificate in_____
course nameThe Board of Studies requires schools to issue students with official warnings in order to give them the opportunity to redeem themselves. Please regard this letter as the _____ (eg 1st, 4th) official warning we have issued concerning _____
course name

A minimum of two course-specific warnings must be issued prior to a final 'N' determination being made for a course.

Course Completion Criteria

In year 12, students must make a genuine attempt at assessment tasks that contribute in excess of 50% of available marks. Completion of tasks worth exactly 50% is not sufficient; tasks worth in excess of 50% must be completed.

To date, _____ has not satisfactorily met _____
student name indicate a), b) or c)
of the Course Completion Criteria*.

The following table lists those tasks, requirements or outcomes not yet completed or achieved, and/or for which a genuine attempt has not been made. In order for

_____ to satisfy Course Completion Criteria,
student name
the following tasks, requirements or outcomes need to be satisfactorily completed/achieved:

<i>Task Name/Course Requirement/Course Outcome</i>	<i>Date Task Initially Due (if applicable)</i>	<i>Action required by student</i>	<i>Date to be completed (if applicable)</i>

***Course completion criteria**

The satisfactory completion of a course requires principals to have sufficient evidence that the student has:

- followed the course developed or endorsed by the Board; and
- applied themselves with diligence and sustained effort to the set tasks and experiences provided in the course by the school; and
- achieved some or all of the outcomes.

Please discuss this matter with _____ and contact
student name

the school if further information of clarification is needed. You may wish to use the Telephone Interpreter Service to contact the school. This service will be free of charge. The telephone number is 131 450.

Yours sincerely



REQUIREMENTS FOR THE SATISFACTORY COMPLETION OF A HIGHER SCHOOL CERTIFICATE COURSE

- ❖ I have received the letter dated _____ indicating that _____
student name
is in danger of not having satisfactorily completed _____.
course name
- ❖ I am aware that this course may not appear on his/her Higher School Certificate Record of Achievement.
- ❖ I am also aware that the 'N' determination may make him/her ineligible for the award of the Higher School Certificate.

Parent/Caregiver's signature: _____ Date: _____

Student's signature: _____ Date: _____

Year 12 Assessment Schedule Summary 2023-2024

Week	TERM 4 2023	TERM 1 2024	TERM 2 2024	TERM 3 2024
1		<ul style="list-style-type: none"> English Extension 2 Visual Arts 		
2		<ul style="list-style-type: none"> English Extension 2 	<ul style="list-style-type: none"> English Extension 1 English Extension 2 	<ul style="list-style-type: none"> Visual Arts
3		<ul style="list-style-type: none"> Chemistry 	<ul style="list-style-type: none"> Physics IT MM 	Trial HSC
4	<ul style="list-style-type: none"> Chemistry 	<ul style="list-style-type: none"> Physics 	<ul style="list-style-type: none"> Chemistry Modern History Visual Arts 	Trial HSC
5	<ul style="list-style-type: none"> Studies of Religion II 		<ul style="list-style-type: none"> English Standard 	
6	<ul style="list-style-type: none"> Mathematics Advanced 	<ul style="list-style-type: none"> English Standard Legal Studies Mathematics Standard 2 Music 1 	<ul style="list-style-type: none"> Business Studies Drama Mathematics Standard 2 	
7	<ul style="list-style-type: none"> Economics Legal Studies IT MM Mathematics Standard 2 Modern History Society and Culture 	<ul style="list-style-type: none"> Business Studies Chemistry English Advanced Modern History Music 1 	<ul style="list-style-type: none"> Mathematics Advanced PDHPE 	

Year 12 Assessment Schedule Summary 2023-2024 (continued)

Week	TERM 4 2023	TERM 1 2024	TERM 2 2024	TERM 3 2024
8	<ul style="list-style-type: none"> • Engineering Studies • English Advanced • English Standard • Geography • Mathematics Extension 1 • Music 1 • Physics 	<ul style="list-style-type: none"> • Biology • Engineering Studies • Modern History • PDHPE 	<ul style="list-style-type: none"> • Ancient History • Music 1 • English Extension 	
9	<ul style="list-style-type: none"> • Ancient History • Business Studies • Drama • PDHPE 	<ul style="list-style-type: none"> • Ancient History • Drama • Economics • Mathematics Advanced • Mathematics Extension 2 • Studies of Religion II • Society and Culture 	<ul style="list-style-type: none"> • Biology • Engineering Studies • English Advanced • Geography • IT MM • Legal Studies • Mathematics Extension 1 	
10	<ul style="list-style-type: none"> • Biology • English Extension 1 • Mathematics Extension 2 	<ul style="list-style-type: none"> • Geography • Mathematics Extension 1 	<ul style="list-style-type: none"> • Economics • Mathematics Extension 2 • Studies of Religion II • Society and Culture 	

- Students should check individual Course Assessment Schedules for details and nature of tasks.
- This is subject to change – students will be issued with a notification of assessment prior to assessment tasks.
- Ongoing tasks, including major projects are not listed in this schedule (this includes externally assessed tasks)

Subject Organisation

The HSC individual assessment programs for each subject which outline:

- The syllabus outcomes
- The components to be assessed
- The weightings of each component
- The types of tasks
- The weighting of individual tasks
- The timing of tasks

Address any questions or concerns regarding a subject to the relevant Head Teacher:

<p>English Faculty Ms L Finigan Head Teacher</p> <ul style="list-style-type: none"> • English Advanced • English Ext 1 • English Ext 2 • English Standard 	<p>Creative & Performing Arts Faculty Ms C Morris Relieving Head Teacher</p> <ul style="list-style-type: none"> • Drama • Music • Visual Arts
<p>HSIE Faculty Mr M Condon Head Teacher</p> <ul style="list-style-type: none"> • Ancient History • Business Studies • Economics • Geography • Legal Studies • Modern History • Studies of Religion II • Society and Culture 	<p>TAS Faculty Mr L Alevizos Head Teacher</p> <p>Vocational Education & Training</p> <ul style="list-style-type: none"> • Construction • Hospitality
<p>Mathematics/Computing Faculty Ms M Marks Relieving Head Teacher</p> <ul style="list-style-type: none"> • Mathematics Advanced • Mathematics Extension 1 • Mathematics Extension 2 • Mathematics Standard 2 • Industrial Technology Multimedia 	<p>Admin/Languages Faculty Ms J Skelton Relieving Head Teacher</p> <ul style="list-style-type: none"> • Saturday Languages
<p>Science Faculty Ms A Arya Head Teacher</p> <ul style="list-style-type: none"> • Biology • Chemistry • Physics 	<p>PDHPE Faculty Mr W Tyler Relieving Head Teacher</p> <ul style="list-style-type: none"> • PDHPE

Ancient History**HSC Assessment Schedule 2023**

	Task 1	Task 2	Task 3	Task 4	Task Weighting
	Term 4 2023 Week 9	Term 1 2024 Week 9	Term 2 2024 Week 8	Term 3 2024 Weeks 3/4	
Syllabus Components	Historical Analysis Historical Period Rome: The Julio Claudians AD14-69	Test Ancient Societies: Spartan Society to the Battle of Leuctra 371 BCE	Test Core Topic: Cities of Vesuvius – Pompeii and Herculaneum	Trial HSC Examination	
Outcomes	AH12-1, AH12-2 AH12-3, AH12-5 AH12-7, AH12-8 AH12-9	AH12-3, AH12-4 AH12-5, AH12-6 AH12-7, AH12-9	AH12-6, AH12-8 AH12-9, AH12-10	AH12-1, AH12-2 AH12-3, AH12-5 AH12-7, AH12-8 AH12-9	
<ul style="list-style-type: none"> Knowledge and understanding of course content 	5%	10%	5%	20%	40%
<ul style="list-style-type: none"> Historical skills in the analysis and evaluation of sources and interpretations 		5%	10%	5%	20%
<ul style="list-style-type: none"> Historical inquiry and research 	10%	5%	5%		20%
<ul style="list-style-type: none"> Communication of historical understanding in appropriate forms 	10%	5%		5%	20%
Total Syllabus Weighting	25%	25%	20%	30%	100%

Biology**HSC Assessment Schedule 2024**

	Task 1	Task 2	Task 3	Task 4	Task Weighting
	Term 4 2023 Week 10	Term 1 2024 Week 8	Term 2 2024 Week 9	Term 3 2024 Weeks 3/4	
Syllabus Components	Depth Study Disorders and Technologies	Data Analysis Epidemiology	Skills Task Inheritance Problem Solving	Trial HSC Examination	
Outcomes	BIO11/12-1 BIO11/12-2 BIO11/12-3 BIO11/12-5 BIO11/12-6 BIO11/12-7 BIO12-15	BIO11/12-4 BIO11/12-5 BIO12-14 BIO12-15	BIO11/12-4 BIO11/12-5 BIO11/12-6 BIO12-12	BIO11/12-4 BIO11/12-5 BIO11/12-6 BIO12-12 BIO12-13 BIO12-14 BIO12-15	
● Knowledge and understanding	10%	5%	10%	15%	40%
● Skills in Working Scientifically	20%	15%	15%	10%	60%
Total Syllabus Weighting	30%	20%	25%	25%	100%

Business Studies**HSC Assessment Schedule 2024**

	Task 1	Task 2	Task 3	Task 4	Task Weighting
	Term 4 2023 Week 9	Term 1 2024 Week 7	Term 2 2024 Week 6	Term 3 2024 Weeks 3/4	
Syllabus Components	Operations Extended Response	Marketing Business Report	Finance Human Resources Stimulus: Short Answer	Trial HSC Examination	
Outcomes	H1, H2, H4, H5, H9	H1, H2, H4, H7, H9	H6, H8, H9, H10	H1, H2, H3, H4, H5, H6, H7, H8, H9, H10	
<ul style="list-style-type: none"> Knowledge and understanding of course content 	5%	10%	5%	20%	40%
<ul style="list-style-type: none"> Stimulus-based skills 		5%	5%	10%	20%
<ul style="list-style-type: none"> Inquiry and Research 	10%	5%	5%		20%
<ul style="list-style-type: none"> Communication 	5%	5%	5%	5%	20%
Total Syllabus Weighting	20%	25%	20%	35%	100%

Chemistry**HSC Assessment Schedule 2024**

	Task 1	Task 2	Task 3	Task 4	Task Weighting
	Term 4 2023 Week 4	Term 1 2024 Week 3	Term 2 2024 Week 4	Term 3 2024 Weeks 3/4	
Syllabus Components	Depth Study Equilibrium / Acid Reactions	Titration Practical Acid/Base Reactions	Skills Organic Chemistry	Trial HSC Examination	
Outcomes	CH11/12-1 CH11/12-5 CH12-12	CH11/12-2 CH11/12-3 CH12-13	CH11/12-6 CH11/12-7 CH12-14	CH11/12-2 CH11/12-3 CH11/12-4 CH11/12-7 CH12-12 CH12-13 CH12-14 CH12-15	
• Knowledge and understanding	10%	10%	10%	10%	40%
• Skills in Working Scientifically	20%	15%	10%	15%	60%
Total Syllabus Weighting	30%	25%	20%	25%	100%

Construction**HSC Assessment Schedule 2024**

Education

PUBLIC SCHOOLS NSW ULTIMO RTO 90072

CONSTRUCTION CATEGORY B BOARD DEVELOPED COURSE ASSESSMENT SCHEDULE

Preliminary Year 2023 – HSC 2024

QUALIFICATION: CPC20220 - Certificate II in Construction Pathways (Release 6) and

Statement of Attainment towards CPC20120 Certificate II in Construction (Release 3)

Training Package: CPC08 - Construction, Plumbing and Services (Release 9.9)

NESA course code

2 U X 2 YR - 26211

2022 HSC Exam:**26299****LMBR UI Code:**

CPC20220126211B or

CPC20120126211B

TERM	Unit Code	Units Of Competency	AQF CORE/ ELECTIVE	HSC STATUS	HSC INDICATIVE Hrs.	Assessment Task Cluster & Method of Assessment	HSC requirements: Exam estimate mark & weighting to total 100%
	6 PRELIMINARY UOCs						240 Indicative Hours over 2 years 30% Preliminary Exam 35 hrs. Work placement
Term 1	CPCCWHS1001	Prepare to work safely in the construction industry	CP-E	M		Cluster 1 – GIT (White Card)	
Term 1	CPCCWHS2001	Apply WHS requirements, policies, and procedures in the construction industry	CP-C	M	20	Cluster 2 – Work Safe Stay Safe	
Term 2	CPCCCM1001 CPCCCOM1015	Undertake basic estimation and costing Carry out measurements and calculations	CP-C CP-C	M M	35	Cluster 3 – Working it out	
Term 3	CPPCCOM2001 CPCCPOM1013	Read and interpret plans and specifications Plan and organise work	C-C CP-C	M M	35	Cluster 4 – Project Planning	
	11 HSC UOCs						
Terms 4/5 Option 1	CPCCBL20001 CPCCBL2002	Handle and prepare bricklaying and blocklaying materials Use bricklaying and blocklaying tools and equipment	CP-E C-E	E E	30	Cluster 5 – Brick and Blocklaying	
Terms 4/5/6/7	CPCCCA2002 CPCCCM2005 CPCCCA2011	Use carpentry tools and equipment Use construction tools and equipment Handle carpentry materials	CP-E C CP-E	E M E	50	Cluster 6 – Tools, Equipment and Materials	
Terms 5/6/7	CPCCVE1011 CPCCCOM1012	Undertake a basic construction project Work effectively and sustainably in the Construction Industry	C CP-C	M M	55	Cluster 7 – Major Project	
<i>NESA requires students to study a minimum of 240 hours to meet Preliminary and HSC requirements.</i>				Total hours	235- 240 245	<i>Units of competency from the HSC focus areas will be included in the optional HSC examination.</i>	

Drama

HSC Assessment Schedule 2024

	Task 1	Task 2	Task 3	Task 4	Task Weighting
	Term 4 2023 Week 9	Term 1 2024 Week 9	Term 2 2024 Week 6	Term 3 2024 Weeks 3/4	
Syllabus Components	Australian Drama and Theatre. Performance and Essay	Studies in Drama and Theatre (Verbatim Theatre) Group Performance and essay	Individual Project. Presentation of work in progress. Logbook and rationale	Trial HSC Examination Written examination Presentation of group performances & individual projects/ logbooks/rationale	
Outcomes	H1.1 - H1.3 H2.1 - H2.2	H1.1 - H1.3 H3.1 - H3.3	H1.3, H1.5, H1.7	H1.1 - H1.7 H2.1 - H2.3 H3.1 - H3.3	
● Making	10%	10%	10%	10%	40%
● Performing	10%	10%		10%	30%
● Critically Studying	5%	5%	10%	10%	30%
Total Syllabus Weighting	25%	25%	20%	30%	100%

Economics**HSC Assessment Schedule 2024**

	Task 1	Task 2	Task 3	Task 4	Task Weighting
	Term 4 2023 Week 7	Term 1 2024 Week 9	Term 2 2024 Week 10	Term 3 2024 Weeks 3/4	
Syllabus Components	Case Study Extended Reponses The Global Economy	Topic Test Multiple choice Short answer Australia's Place in the Global Economy	In class extended response Economic Issues	Trial HSC Examination	
Outcomes	H1, H2, H3, H5, H8, H9	H2, H4, H5, H11, H7	H7, H9, H10, H11, H12	H1, H2, H5, H6, H7, H10	
● Knowledge and understanding of course content	5%	10%	10%	15%	40%
● Stimulus-based skills		10%	5%	5%	20%
● Inquiry and Research	10%		10%		20%
● Communication of economic information, ideas and issues in appropriate forms	5%		5%	10%	20%
Total Syllabus Weighting	20%	20%	30%	30%	100%

Engineering Studies**HSC Assessment Schedule 2024**

	Task 1	Task 2	Task 3	Task 4	Task Weighting
	Term 4 2023 Week 8	Term 1 2024 Week 8	Term 2 2024 Week 9	Term 3 2024 Weeks 3/4	
Syllabus Components	Engineering Report & Test – Civil Structures	Research task / Engineering Report – Personal and Public Transport	Engineering Report Aeronautical Engineering	Trial HSC Examination	
Outcomes	H2.1, H3.1, H4.3, H5.1, H6.2	H1.1, H1.2, H4.1, H4.2, H4.3.	H2.2, H3.2, H3.3, H4.2, H6.1	H3.1, H3.2, H3.3, H4.2, H4.3, H5.2	
<ul style="list-style-type: none"> Knowledge and understanding of engineering principles and developments in technology 	10%	10%	10%	10%	40%
<ul style="list-style-type: none"> Skills in research, problem solving and communication related to engineering 	10%	10%	10%	10%	40%
<ul style="list-style-type: none"> Understanding the scope and role of engineering including management and problem solving 	5%	5%	5%	5%	20%
Total Syllabus Weighting	25%	25%	25%	25%	100%

English Advanced**HSC Assessment Schedule 2024**

	Task 1	Task 2	Task 3	Task 4	Task Weighting
	Term 4 2023 Week 8	Term 1 2024 Week 7	Term 2 2024 Week 9	Term 3 2024 Weeks 3/4	
Syllabus Components	Multimodal text using prescribed text and related material Texts and Human Experiences	Comparative essay Textual Conversations	Imaginative task Craft of Writing	Trial HSC Examination Common Module Module A & B	
Outcomes	EA12-1, EA12-2, EA12-3, EA12-5, EA12-6, EA12-7	EA12-1, EA12-3, EA12-5, EA12-6, EA12-8	EA12-2, EA12-3, EA12-4, EA12-5, EA12-7, EA12-9	EA12-3, EA12-4, EA12-5, EA12-6, EA12-8	
<ul style="list-style-type: none"> Knowledge and understanding of course content 	10%	15%	10%	15%	50%
<ul style="list-style-type: none"> Skills in responding to texts and communication of ideas appropriate to audience, purpose and context across all modes 	10%	10%	15%	15%	50%
Total Syllabus Weighting	20%	25%	25%	30%	100%

English Extension 1**HSC Assessment Schedule 2024**

	Task 1	Task 2	Task 3	Task Weighting
	Term 4 2023 Week 10	Term 2 2024 Week 2	Term 3 2024 Week 3/4	
Syllabus Components	Imaginative response and reflection	Critical response with related text	Trial HSC Examination	
Outcomes	EE12-2, EE12-4, EE12-5	EE12-1, EE12-2, EE12-3, EE12-4	EE12-2, EE12-3, EE12-4, EE12-5	
<ul style="list-style-type: none"> Knowledge and Understanding of texts and why they are valued 	15%	20%	15%	50%
<ul style="list-style-type: none"> Skills in complex analysis composition and investigation 	15%	20%	15%	50%
Total Syllabus Weighting	30%	40%	30%	100%

English Extension 2**HSC Assessment Schedule 2024**

	Task 1	Task 2	Task 3	Task Weighting
	Term 1 2024 Week 2	Term 2 2024 Week 2	Term 2 2024 Week 8	
Syllabus Components	Viva Voce and written proposal	Literature review	Critique of the creative process	
Outcomes	EEX12-1, EEX12-4, EEX12-5	EEX12-1, EEX12-2, EEX12-3, EEX12-4	EEX12-2, EEX12-3, EEX12-5	
<ul style="list-style-type: none"> Knowledge and Understanding of texts and why they are valued 	15%	20%	15%	50%
<ul style="list-style-type: none"> Skills in complex analysis composition and investigation 	15%	20%	15%	50%
Total Syllabus Weighting	30%	40%	30%	100%

English Standard**HSC Assessment Schedule 2024**

	Task 1	Task 2	Task 3	Task 4	Task Weighting
	Term 4 2023 Week 8	Term 1 2024 Week 6	Term 2 2024 Week 5	Term 3 2024 Weeks 3/4	
Syllabus Components	Texts and Human Experiences Multimodal text using prescribed text and related material	Language, Culture and Identity Analytical response	Craft of Writing Imaginative text	Trial HSC Examination Common Module Modules A & B	
Outcomes	EN12-1, EN12-2, EN12-3, EN12-4, EN12-6, EN12-7	EN12-1, EN12-3, EN12-5, EN12-7, EN12-8	EN12-1, EN12-2, EN12-3, EN12-4, EN12-5, EN12-9	EN12-1, EN12-3, EN12-4, EN12-5, EN12-6, EN12-7	
<ul style="list-style-type: none"> Knowledge and understanding of course content 	10%	15%	10%	15%	50%
<ul style="list-style-type: none"> Skills in responding to texts and communication of ideas appropriate to audience, purpose and context across all modes 	15%	5%	15%	15%	50%
Total Syllabus Weighting	25%	20%	25%	30%	100%

Geography**HSC Assessment Schedule 2024**

	Task 1	Task 2	Task 3	Task 4	Task Weighting
	Term 4 2023 Week 8	Term 1 2024 Week 10	Term 2 2024 Week 9	Term 3 2024 Weeks 3/4	
Syllabus Component	Extended Response – In-class Assessment Ecosystems at Risk	Extended Response: Report Style (fieldwork) Urban Places	Geographical Skills and Short and Responses – In Class Assessment People and Economic Activity	Trial HSC Examination	
Outcomes	H1, H3, H5, H6, H8, H9, H10, H12, H13	H1, H2, H5, H6, H12, H13	H9, H10, H11	H1, H2, H3, H4, H5, H6, H8, H9, H10, H11, H12, H13	
<ul style="list-style-type: none"> Knowledge and understanding of course content 	10%	10%	5%	15%	40%
<ul style="list-style-type: none"> Geographical Tools and Skills 		5%	10%	5%	20%
<ul style="list-style-type: none"> Geographical inquiry and research including fieldwork 	10%	5%	5%		20%
<ul style="list-style-type: none"> Communication of geographical information, ideas and issues in appropriate forms. 	5%	5%		10%	20%
Total Syllabus Weighting	25%	25%	20%	30%	100%

Hospitality – Cookery

Ultimo RTO – Department of Education – 90072

Assessment Schedule 2024

Qualification: SIT20421 Certificate II in Cookery

Cohort 2023 - 2024

Training Package SIT Tourism, Travel and Hospitality (version2.1)

Assessment Tasks for SIT20421 Certificate II in Cookery		Task 3	Task 4	Task 5	½ yearly Exam** (Optional)	
		Week TBA Term 4 Date:	Week TBA Term 5 Date:	Week TBA Term 7 Date:	Week N/A Term Date:	Trial Exam** Week 3-4 Term 3 Date: July / August 2024
Code	Unit of Competency					
SITHCCC026	Package prepared foodstuffs	X				
SITHCCC023	Use food preparation equipment		X			
SITHCCC024	Prepare and present simple dishes		X			
SITHCCC027	Prepare dishes using basic methods of cookery			X		
SITHCCC034	Work effectively in a commercial kitchen			X		

Depending on the achievement of units of competency, the possible qualification outcome is SIT20421 Certificate II in Cookery.

The exam Tasks will be confirmed by your teacher as they may be used for the assessment of competencies and /or NESA reporting requirements. * Selected units only to be confirmed by your teacher.

The assessment components in this course are competency based. This means that students need to demonstrate that they have gained and can apply the specific knowledge and skills of each unit of competency. Competency assessment is graded as “not yet competent” or “competent”. In some cases, other descriptive words may be used leading up to “competent”. This means a course mark is not allocated.

Industrial Technology Multimedia HSC Assessment Schedule 2024

	Task 1	Task 2	Task 3	Task 4	Task Weighting
	Term 4 2023 Week 7	Term 2 2024 Week 3	Term 2 2024 Week 9	Term 3 2024 Weeks 3/4	
Syllabus Components	Designing and Planning Presentation	Evidence Video and Emerging Technologies	Project Development and Management Report	Trial HSC Examination	
Outcomes	H3.1, H3.2, H4.3, H5.2	H3.2, H4.3, H5.2	H2.1, H3.3, H4.3, H5.1, H5.2, H6.2	H1.1, H1.2, H1.3, H3.1 H4.3, H6.1, H7.1, H7.2	
<ul style="list-style-type: none"> Knowledge and understanding of course content 	5%	5%	10%	20%	40%
<ul style="list-style-type: none"> Knowledge and skills in the design, management, communication and production of a major project. 	15%	15%	20%	10%	60%
Total Syllabus Weighting	20%	20%	30%	30%	100%

Legal Studies**HSC Assessment Schedule 2024**

	Task 1	Task 2	Task 3	Task 4	Task Weighting
	Term 4 2023 Week 7	Term 1 2024 Week 6	Term 2 2024 Week 9	Term 3 2024 Weeks 3/4	
Syllabus Components	Crime: Case Study	Human Rights: Presentation of a contemporary issue	Focus Studies: Research and in-class task	Trial HSC Examination	
Outcomes	H1, H4, H5, H6, H7, H8, H9	H2, H3, H4, H5, H6, H9	H1, H4, H5, H8, H9, H10	All	
<ul style="list-style-type: none"> Knowledge and understanding of course content 	10%	10%	10%	10%	40%
<ul style="list-style-type: none"> Analysis & Evaluation 	5%	5%	5%	5%	20%
<ul style="list-style-type: none"> Research 	5%	5%	5%	5%	20%
<ul style="list-style-type: none"> Communication 	5%	5%	5%	5%	20%
Total Syllabus Weighting	25%	25%	25%	25%	100%

Mathematics Advanced**HSC Assessment Schedule 2024**

	Task 1	Task 2	Task 3	Task 4	Task Weighting
	Term 4 2023 Week 6	Term 1 2024 Week 9	Term 2 2024 Week 7	Term 3 2024 Weeks 3/4	
Syllabus Components	Class Test Topics: F2, T3	Class Test Topics: C2, C3, C4	Assignment / Investigation Topics: S2, S3.1	Trial HSC Examination Topics: F2, T3, C2, C3, C4, M1, S2, S3	
Outcomes	MA12-1 MA12-5 MA12-9 MA12-10	MA12-3 MA12-6 MA12-7 MA12-9 MA12-10	MA12-3 MA12-7 MA12-8 MA12-9 MA12-10	MA12-1, MA12-2 MA12-3, MA12-4 MA12-5, MA12-6 MA12-7, MA12-8 MA12-9, MA12-10	
<ul style="list-style-type: none"> Understanding, Fluency and Communicating 	15%	15%	5%	15%	50%
<ul style="list-style-type: none"> Problem Solving, Reasoning and Justification 	10%	10%	15%	15%	50%
Total Syllabus Weighting	25%	25%	20%	30%	100%

Mathematics Extension 1**HSC Assessment Schedule 2024**

	Task 1	Task 2	Task 3	Task 4	Task Weighting
	Term 4 2023 Week 8	Term 1 2024 Week 10	Term 2 2024 Week 9	Term 3 2024 Weeks 3/4	
Syllabus Components	Class test Topics: V1.1, V1.2	Class test Topic: P1, T3, C3	Assignment / Investigation Topic: S1	Trial HSC Examination Topics: P1, V1, T3, C2, C3, S1	
Outcomes	ME12-2 ME12-6 ME12-7	ME12-1 ME12-4 ME12-6 ME12-7	ME12-5 ME12-6 ME12-7	ME12-1, ME12-2 ME12-3, ME12-4 ME12-5, ME12-6 ME12-7	
<ul style="list-style-type: none"> Understanding, Fluency and Communicating 	10%	15%	10%	15%	50%
<ul style="list-style-type: none"> Problem Solving, Reasoning and Justification 	10%	10%	15%	15%	50%
Total Syllabus Weighting	20%	25%	25%	30%	100%

NOTE: Mathematics Extension 1 students are also required to sit for the Mathematics Advanced assessments.

Mathematics Extension 2**HSC Assessment Schedule 2024**

	Task 1	Task 2	Task 3	Task 4	Task Weighting
	Term 4 2023 Week 10	Term 1 2024 Week 9	Term 2 2024 Week 10	Term 3 2024 Weeks 3/4	
Syllabus Components	Class test Topics: N1, P1	Class test Topic: P2, N2	Assignment / Investigation Topics: V1	Trial HSC Examination Topics: P1, P2, V1, N1, N2, C1, M1	
Outcomes	MEX12-1 MEX12-2 MEX12-4 MEX12-7 MEX12-8	MEX12-1 MEX12-2 MEX12-4 MEX12-7 MEX12-8	MEX12-3 MEX12-7 MEX12-8	MEX12-1, MEX12-2 MEX12-3, MEX12-4 MEX12-5, MEX12-6 MEX12-7, MEX12-8	
<ul style="list-style-type: none"> Understanding, Fluency and Communicating 	10%	15%	10%	15%	50%
<ul style="list-style-type: none"> Problem Solving, Reasoning and Justification 	10%	10%	15%	15%	50%
Total Syllabus Weighting	20%	25%	25%	30%	100%

Mathematics Standard 2**HSC Assessment Schedule 2024**

	Task 1	Task 2	Task 3	Task 4	Task Weighting
	Term 4 2023 Week 7	Term 1 2024 Week 6	Term 2 2024 Week 6	Term 3 2024 Weeks 3/4	
Syllabus Components	Assignment / Investigation Topics: N2.1, N2.2	In-class test Topics: F4, M7, A4.1	In-class open book test Topics: N3, S4, F5	Trial HSC Examination Topics: A4, M6, M7, F4, F5, S4, S5, N2	
Outcomes	MS2 – 12-8 MS2 – 12-9 MS2 - 12-10	MS2 – 12-1 MS2 – 12-3 MS2 – 12-4 MS2 - 12-5 MS2 – 12-6 MS2 – 12-9 MS2 – 12-10	MS2 – 12-2 MS2 – 12-5 MS2 – 12-7 MS2 – 12-8 MS2 – 12-9 MS2 – 12-10	MS2 – 12-1 MS2 – 12-2 MS2 – 12-3 MS2 – 12-4 MS2 – 12-5 MS2 – 12-6 MS2 – 12-7 MS2 – 12-8 MS2 – 12-9 MS2 – 12-10	
<ul style="list-style-type: none"> Understanding, Fluency and Communicating 	10%	15%	10%	15%	50%
<ul style="list-style-type: none"> Problem Solving, Reasoning and Justification 	15%	10%	10%	15%	50%
Total Syllabus Weighting	25%	25%	20%	30%	100%

Modern History**HSC Assessment Schedule 2024**

	Task 1	Task 2	Task 3	Task 4	Task Weighting
	Term 4 2023 Week 7	Term 1 2024 Weeks 7/8	Term 2 2024 Week 4	Term 3 2024 Weeks 3/4	
Syllabus Components	National Study Research task - Extended Response	Power and Authority in the Modern World 1919-1946 Source Based Investigation	Peace and Conflict Historical Analysis and essay	Trial HSC Examination	
Outcomes	MH12-1, MH12-2 MH12-3, MH12-4 MH12-5, MH12-9	MH12-2, MH12-3 MH12-4, MH12-6 MH12-9	MH12-2, MH12-3 MH12-4, MH12-5 MH12-8, MH12-9	MH12-1, MH12-2 MH12-3, MH12-4 MH12-5, MH12-6 MH12-7, MH12-9	
<ul style="list-style-type: none"> Knowledge and understanding of course content 	5%	10%	10%	15%	40%
<ul style="list-style-type: none"> Historical skills in the analysis and evaluation of sources and interpretations 		10%		10%	20%
<ul style="list-style-type: none"> Historical inquiry and research 	10%		10%		20%
<ul style="list-style-type: none"> Communication of historical understanding in appropriate forms 	5%	5%	5%	5%	20%
Total Syllabus Weighting	20%	25%	25%	30%	100%

Music 1**HSC Assessment Schedule 2024**

	Task 1	Task 2	Task 3	Task 4	Task Weighting
	Term 4 2023 Week 8	Term 1 2024 Week 7	Term 2 2024 Week 8	Term 3 2024 Week 3/4	
Syllabus Components	Composition portfolio and Aural Analysis Topic 1 Submission of a composition or arrangement, aural analysis of composition with reference to the concepts of music relevant to the chosen topic	Presentation of Performance and Viva Voce Topic 2 Solo of ensemble performance and in class viva voce based on performance repertoire demonstrating an understanding of composition and performance technique and features of the topic	Presentation or Submission: Elective option for Topics 1 and 2 (Student's Choice) Presentation of performance and/or composition portfolio and/or musicology outline and viva voce	Trial HSC Examination Aural Skills Examinations Presentation of electives performance or elective musicology outline and viva voce based on Topic 3	
Outcomes	H2, H4, H5, H6, H7, H8	H1, H2, H4, H5, H6	H1-8	H1-8	
● Performance		10%			10%
● Composition	10%				10%
● Musicology		10%			10%
● Aural	10%			15%	25%
● Electives			Elective 1 = 15% Elective 2 = 15%	Elective 3 = 15%	45%
Total Syllabus Weighting	20%	20%	30%	30%	100%

Personal Development / Health / Physical Education**HSC Assessment Schedule 2024**

	Task 1	Task 2	Task 3	Task 4	Task Weighting
	Term 4 2023 Week 9	Term 1 2024 Week 8	Term 2 2024 Week 7	Term 3 2024 Week 3/4	
Syllabus Components	Core 2: Factors Affecting Performance	Option Improving Performance	Option Sports Medicine	Trial HSC Examination	
Outcomes	H7, H8, H9, H10, H11, H16, H17	H7, H8, H9, H10, H11, H16, H17	H8, H13, H16, H17	H1, H2, H3, H4, H5, H7, H8, H9, H10, H11, H13, H14, H15, H16, H17	
<ul style="list-style-type: none"> Knowledge and understanding of the factors that affect health and the way the body moves 	10%	10%	5%	15%	40%
<ul style="list-style-type: none"> Skills in influencing personal and community health and taking action to improve participation and performance in physical activity 	10%	5%	10%	10%	35%
<ul style="list-style-type: none"> Skills in critical thinking, research and analysis 	10%	5%	5%	5%	25%
Total Syllabus Weighting	30%	20%	20%	30%	100%

Physics**HSC Assessment Schedule 2024**

	Task 1	Task 2	Task 3	Task 4	Task Weighting
	Term 4 2023 Week 8	Term 1 2024 Week 4	Term 2 2024 Week 3	Term 3 2024 Week 3/4	
Syllabus Components	Practical Task Advanced Mechanics	Depth Study Literature Review and Investigation Electromagnetism	Processing / Modelling Task Nature of Light	Trial HSC Examination	
Outcomes	PH11/12-3 PH11/12-5 PH11/12-6 PH11/12-7 PH12-13	PH11/12-4 PH12-12	PH11/12-3 PH11/12-4 PH11/12-7 PH12-14	PH11/12-4 PH11/12-5 PH11/12-6 PH12-12 PH12-13 PH12-14 PH12-15	
• Knowledge and Understanding	5%	5%	10%	20%	40%
• Skills in Working Scientifically	20%	15%	15%	10%	60%
Total Syllabus Weighting	25%	20%	25%	30%	100%

Society and Culture**HSC Assessment Schedule 2024**

	Task 1	Task 2	Task 3	Task 4	Task Weighting
	Term 4 2023 Week 7	Term 1 2024 Week 9	Term 2 2024 Week 10	Term 3 2024 Weeks 3/4	
Syllabus Components	Continuity and Change In class essay Theories	Topic Test Popular Culture	Depth Study Responses Belief Systems and Ideologies	Trial HSC Examination All topics, excluding the PIP	
Outcomes	H1, H4, H5, H6, H10	H1,H4, H5, H6, H10	H2, H3, H9, H10	H2, H3, H6, H9, H10	
<ul style="list-style-type: none"> Knowledge and understanding 	10%	10%	5%	15%	40%
<ul style="list-style-type: none"> Application and evaluation of research methods 			15%	5%	20%
<ul style="list-style-type: none"> Communication of information, ideas and issues 	10%	10%	10%	10%	40%
Total Syllabus Weighting	20%	20%	30%	30%	100%

Studies of Religion II**HSC Assessment Schedule 2024**

	Task 1	Task 2	Task 3	Task 4	Task Weighting
	Term 1 2023 Week 5	Term 1 2024 Week 9	Term 2 2024 Week 10	Term 3 2024 Week 3/4	
Syllabus Components	Religious Tradition Depth Study I	Religious Tradition Depth Study II	Depth Study III and Religion and Peace	Trial HSC Examination	
Outcomes	H1, H2, H7, H9	H1, H2, H3, H4, H5, H7, H8, H9	H2, H5, H6, H8	H1, H2, H3, H4, H5, H6, H8, H9	
<ul style="list-style-type: none"> Knowledge and understanding of course content 	5%	10%	10%	15%	40%
<ul style="list-style-type: none"> Source-based skills 	10%	5%		5%	20%
<ul style="list-style-type: none"> Investigation and research 	5%	5%	10%		20%
<ul style="list-style-type: none"> Communication of information, ideas and issues in appropriate forms 		5%	5%	10%	20%
Total Syllabus Weighting	20%	25%	25%	30%	100%

Visual Arts**HSC Assessment Schedule 2024**

	Task 1	Task 2	Task 3	Task 4	Task Weighting
	Term 1 2024 Week 1	Term 2 2024 Week 4	Term 3 2024 Week 2	Term 3 2024 Week 3/4	
Syllabus Components	Exploring Practice Submission of VAPD Progress exploring the Body of Work Case Study: Critical and Historical interpretation of Art	Developing Practice Submission of artworks under development and VAPD with annotated evaluation of a sustained exploration of materials and ideas. Case Study: Critical and Historical investigations of Art	Resolving Practice Submission of Body of Work, VAPD, written analysis of intention and art making practice	Trial HSC Examinations Art Criticism and Art History Written Examination	
Outcomes	H1, H4, H7,	H5, H8	H6	H10	
• Art making	10%	10%	30%		50%
• Art Criticism and Art History	10%	10%		30%	50%
Total Syllabus Weighting	20%	20%	30%	30%	100%

THIS PAGE IS LEFT BLANK